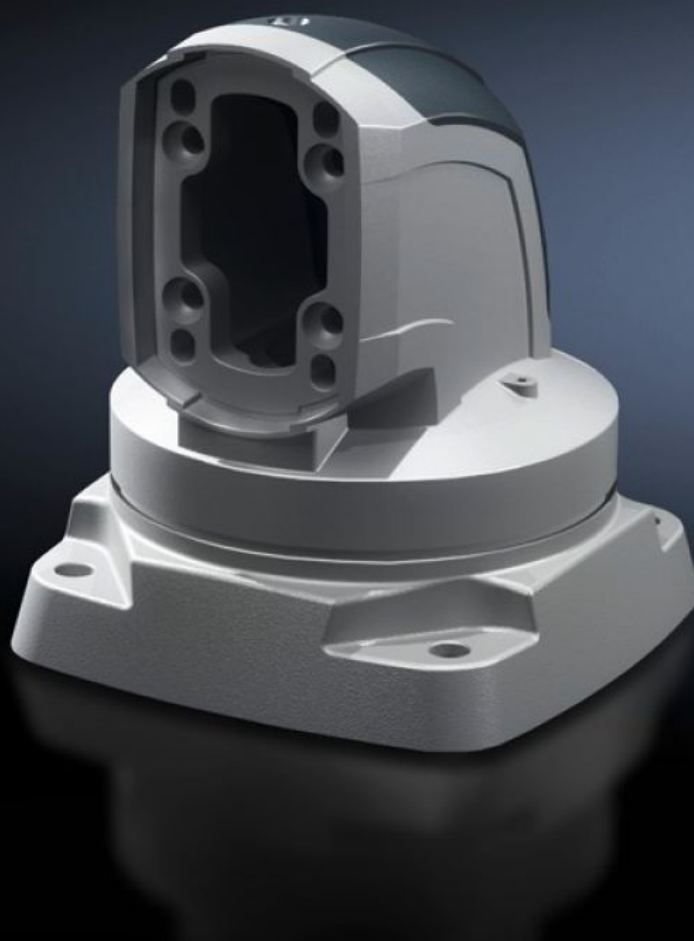


**Rittal – The System.**

Faster – better – everywhere.



**CP 6212.700**

**Top-mounted joint CP 120**

State: 1.2.2026 (Source: [rittal.com/si-sl](https://www.rittal.com/si-sl))

ENCLOSURES

POWER DISTRIBUTION

CLIMATE CONTROL

IT INFRASTRUCTURE

SOFTWARE & SERVICES

FRIEDHELM LOH GROUP



# CP 6212.700 - Top-mounted joint CP 120 Horizontal outlet

For swivel mounting of the support arm system on horizontal surfaces – also suitable for suspending from the ceiling. Removable cover for simple cable entry.

## Features

Model No.	CP 6212.700
Product description	For swivel mounting of the support arm system on horizontal surfaces – also suitable for suspending from the ceiling. Removable cover for simple cable entry.
Material	Top-mounted joint: Cast aluminium Cover: Plastic
Colour	Top-mounted joint: RAL 7035 Cover: RAL 7024
Supply includes	Seals Screws for restricting rotation range Adjusting screws Self-tapping screws for support section attachment
Rotating/tilting	Yes
Rotation angle/swivel area	approx. 330°. The range of rotation can be limited by inserting the screws/limit plate provided.
Packs of	1 pc(s).
Net weight	5.75
Gross weight	5.86
Customs tariff number	76169990
EAN	4028177683990
ETIM 9	EC000882
ECLASS 8.0	27400556

# Approvals

---

Explanations

Manufacturer's declaration