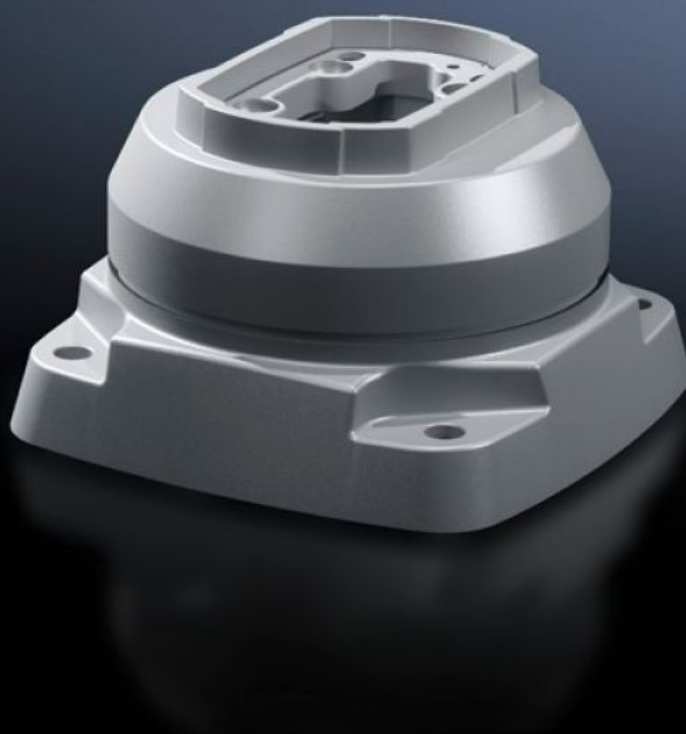


Rittal – The System.

Faster – better – everywhere.



CP 6212.720

Top-mounted joint CP 120

State: 23.8.2025 (Source: [rittal.com/si-sl](https://www.rittal.com/si-sl))

ENCLOSURES

POWER DISTRIBUTION

CLIMATE CONTROL

IT INFRASTRUCTURE

SOFTWARE & SERVICES

FRIEDHELM LOH GROUP



CP 6212.720 - Top-mounted joint CP 120 Vertical outlet

For swivel mounting of the support arm system on horizontal surfaces – also suitable for suspending from the ceiling.

Features

Model No.	CP 6212.720
Product description	For swivel mounting of the support arm system on horizontal surfaces – also suitable for suspending from the ceiling.
Material	Cast aluminium
Colour	RAL 7035
Supply includes	Seals Screws for restricting rotation range Adjusting screws Self-tapping screws for support section attachment
Rotating/tilting	Yes
Rotation angle/swivel area	approx. 330°. The range of rotation can be limited by inserting the screws provided.
Packs of	1 pc(s).
Net weight	5
Gross weight	5.42
Customs tariff number	76169990
EAN	4028177684003
ETIM 9	EC000882
ECLASS 8.0	27400556

Approvals

Approvals

Explanations	Manufacturer's declaration
--------------	----------------------------