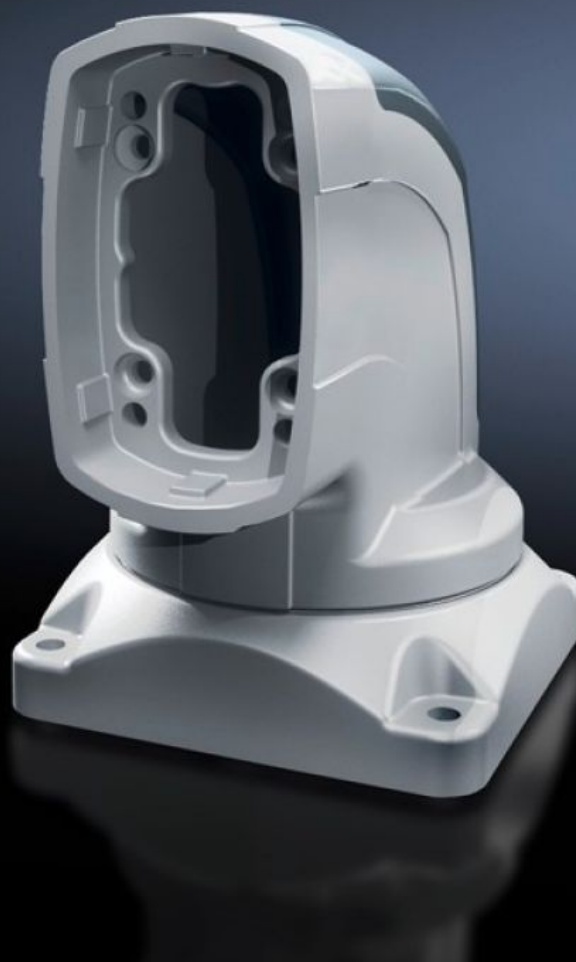


# Rittal – The System.

Faster – better – everywhere.



## CP 6218.700

## Top-mounted joint CP 180

State: 23.8.2025 (Source: [rittal.com/si-sl](https://www.rittal.com/si-sl))

ENCLOSURES

POWER DISTRIBUTION

CLIMATE CONTROL

IT INFRASTRUCTURE

SOFTWARE & SERVICES

FRIEDHELM LOH GROUP



# CP 6218.700 - Top-mounted joint CP 180 Horizontal outlet

For swivel mounting of the support arm system on horizontal surfaces – also suitable for suspending from the ceiling. Removable cover for simple cable entry.

## Features

Model No.	CP 6218.700
Product description	For swivel mounting of the support arm system on horizontal surfaces – also suitable for suspending from the ceiling. Removable cover for simple cable entry.
Material	Top-mounted joint: Cast steel Cover: Plastic
Colour	Top-mounted joint: RAL 7035 Cover: RAL 7024
Supply includes	Seals Screws for restricting rotation range Adjusting screws Self-tapping screws for support section attachment
Rotating/tilting	Yes
Rotation angle/swivel area	approx. 330°. The range of rotation can be limited by inserting the screws/limit plate provided.
Packs of	1 pc(s).
Net weight	18
Gross weight	18.65
PCF per pack (cradle-to-gate)	68.6 kg CO2 eq (Cat B)
Note on PCF category	Category B: PCF value (cradle-to-gate) based on the product weight, approximately calculated and self-declared
Customs tariff number	73269098
EAN	4028177683860
ETIM 9	EC000882

# Features

---

ECLASS 8.0	27400556
------------	----------

# Approvals

---

Explanations	Manufacturer's declaration
--------------	----------------------------