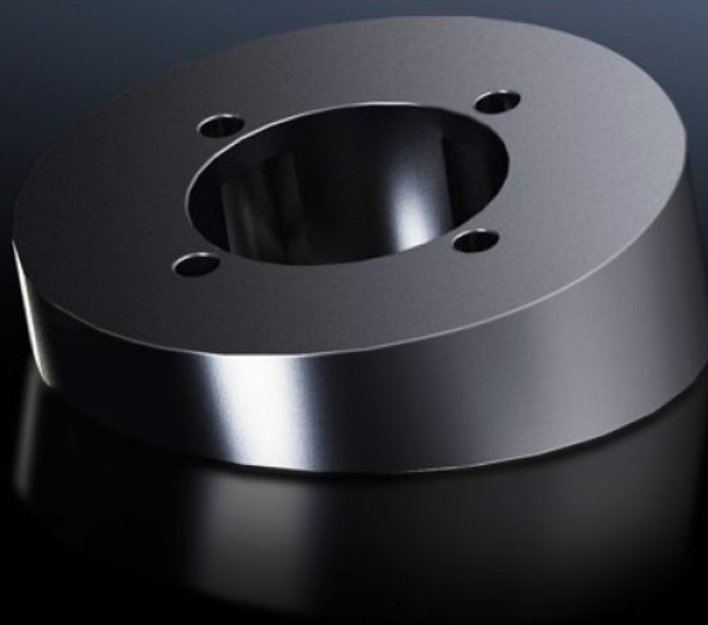


Rittal – The System.

Faster – better – everywhere.



CP 6664.100

Tilting adapter 10° CP 40, stainless steel

State: 25.8.2025 (Source: [rittal.com/si-sl](https://www.rittal.com/si-sl))

ENCLOSURES

POWER DISTRIBUTION

CLIMATE CONTROL

IT INFRASTRUCTURE

SOFTWARE & SERVICES

FRIEDHELM LOH GROUP



CP 6664.100 - Tilting adapter 10° CP 40, stainless steel

For mounting between coupling system 40 or attachment system 40 and the command panel.

Features

Model No.	CP 6664.100
Design	Tilting adaptor 10°
Material	Stainless steel 1.4305 (AISI 303)
IP protection category to IEC 60 529	IP 66 to IEC 60 529, 2014-09 IP X9 to IEC 60 529, 2014-09
Rifid y/n	Yes
Packs of	1 pc(s).
Net weight	0.62
Gross weight	0.721
Customs tariff number	73269098
EAN	4028177195066
ETIM 9	EC000882
ECLASS 8.0	27400556

Approvals

Explanations	Manufacturer's declaration
--------------	----------------------------