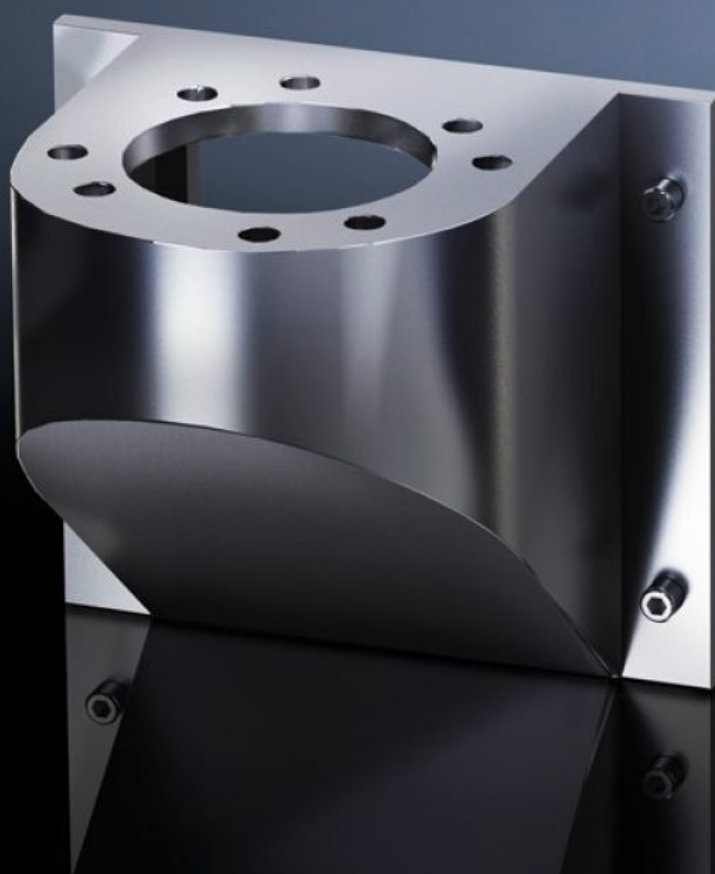
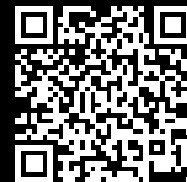


# Rittal – The System.

Faster – better – everywhere.



## CP 6665.500

## Wall console CP 40, stainless steel

State: 14.9.2025 (Source: [rittal.com/si-sl](https://www.rittal.com/si-sl))

ENCLOSURES

POWER DISTRIBUTION

CLIMATE CONTROL

IT INFRASTRUCTURE

SOFTWARE & SERVICES

FRIEDHELM LOH GROUP



# CP 6665.500 - Wall console CP 40, stainless steel

## Features

Model No.	CP 6665.500
Design	Front, hole Ø 9 mm
Applications	With holes for mounting Base mount, swivel, CP 40, stainless steel (6663.500), with 4 screws Wall/base mount, rigid, CP 40, stainless steel (6663.000), with 4 screws and nuts
Material	Stainless steel 1.4301 (AISI 304)
IP protection category to IEC 60 529	IP 66 to IEC 60 529, 2014-09 IP X9 to IEC 60 529, 2014-09
Rifid y/n	Yes
Packs of	1 pc(s).
Net weight	1.6
Gross weight	1.755
Customs tariff number	73269098
EAN	4028177184725
ETIM 9	EC000882
ECLASS 8.0	27400556

## Approvals

Explanations	Manufacturer's declaration
--------------	----------------------------