

Rittal – The System.

Faster – better – everywhere.



DK 7151.035

Blanking panel, 482.6 mm (19")

State: 7.9.2025 (Source: [rittal.com/si-sl](https://www.rittal.com/si-sl))

ENCLOSURES

POWER DISTRIBUTION

CLIMATE CONTROL

IT INFRASTRUCTURE

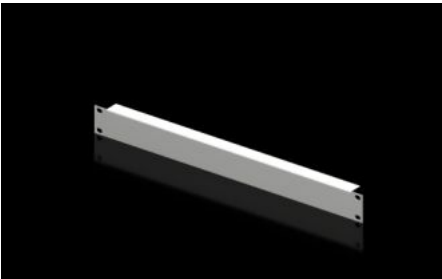
SOFTWARE & SERVICES

FRIEDHELM LOH GROUP



DK 7151.035 - Blanking panel, 482.6 mm (19")

As an extension cover or for population as required.



Features

Model No.	DK 7151.035
Product description	As an extension cover or for population as required.
Material	Sheet steel
Colour	RAL 7035
Build-up height	44 mm
Dimensions	Width: 482.6 mm
Units	1 U
Packs of	2 pc(s).
Net weight	0.568
Gross weight	0.664
PCF per pack (cradle-to-gate)	2.5 kg CO2 eq (Cat B)
Note on PCF category	Category B: PCF value (cradle-to-gate) based on the product weight, approximately calculated and self-declared
Customs tariff number	94039910
EAN	4028177165748
ETIM 9	EC000456
ECLASS 8.0	27189217

Tender text

482.6 mm (19") blanking panel, 1 U

482.6 mm (19") blanking panel, 1 U

Used as an extension cover or for fitting separately.

Installation height: 44 mm, 1 U

Version: Sheet steel

Paint finish: RAL 7035