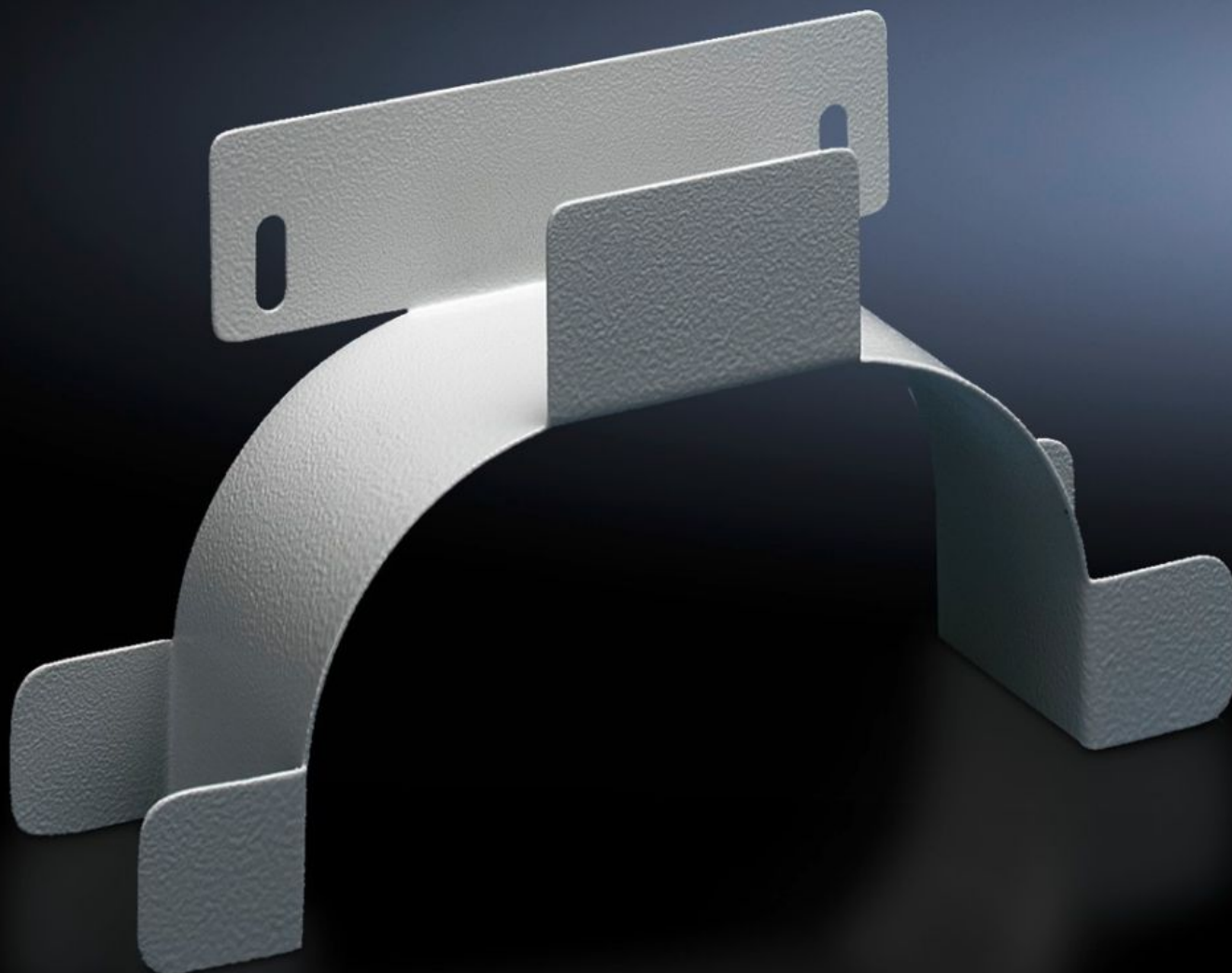


Rittal – The System.

Faster – better – everywhere.



DK 7220.500

Surplus cable holder

State: 13.7.2025 (Source: [rittal.com/si-sl](https://www.rittal.com/si-sl))

ENCLOSURES

POWER DISTRIBUTION

CLIMATE CONTROL

IT INFRASTRUCTURE

SOFTWARE & SERVICES

FRIEDHELM LOH GROUP



DK 7220.500 - Surplus cable holder

For fastening at the rear area of the enclosure, or at the side of network enclosures.



Features

Model No.	DK 7220.500
Product description	For fastening at the rear area of the enclosure, or at the side of network enclosures. The surplus cable holder can be attached to all depth stays or to punched sections and rails with a 25 mm pitch pattern – mounting dimension 150 mm.
Material	Sheet steel
Surface finish	Zinc-plated
Colour	RAL 7035
Dimensions	Width: 280 mm Height: 151 mm Depth: 75 mm
Packs of	1 pc(s).
Net weight	0.56
Gross weight	0.66
PCF per pack (cradle-to-gate)	3.3 kg CO2 eq (Cat B)
Note on PCF category	Category B: PCF value (cradle-to-gate) based on the product weight, approximately calculated and self-declared
Customs tariff number	73269098

Features

EAN	4028177221659
ETIM 9	EC000322
ECLASS 8.0	27400604

Tender text

Surplus cable holder

Material: Sheet steel, RAL 7035

Dimensions (W x H x D): 280 mm x 151 mm x 75 mm