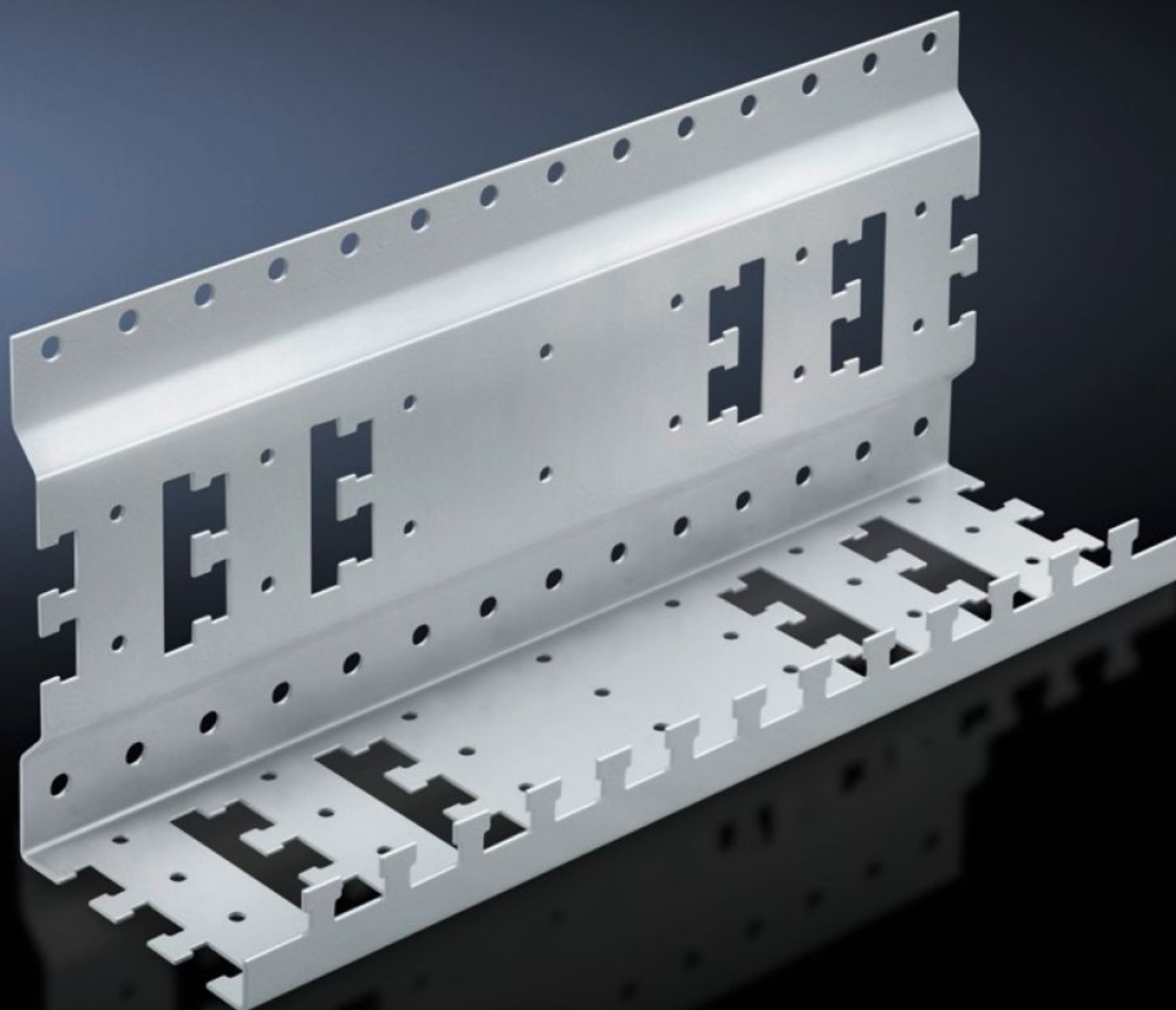


Rittal – The System.

Faster – better – everywhere.



DK 7246.500

Support

State: 14.7.2025 (Source: [rittal.com/si-sl](https://www.rittal.com/si-sl))

ENCLOSURES

POWER DISTRIBUTION

CLIMATE CONTROL

IT INFRASTRUCTURE

SOFTWARE & SERVICES

FRIEDHELM LOH GROUP



DK 7246.500 - Support for small appliances

For secure attachment of small, non-482.6 mm (19")-conforming equipment.



Features

Model No.	DK 7246.500
Product description	For secure attachment of non-482.6 mm (19")-conforming small appliances such as modems, power packs, routers etc. Angular support for mounting in the free space at the side between the 482.6 mm (19") level and the side panel on mounting angles or punched sections. Attachment of the components and connection cables can be achieved quickly and easily using nylon tape or cable ties. Also suitable for cable routing in the enclosure depth.
Material	Sheet steel
Surface finish	Zinc-plated
Supply includes	Assembly parts
Dimensions	Width: 350 mm Height: 150 mm Depth: 97 mm
Packs of	1 pc(s).
Net weight	1.2
Gross weight	1.411
PCF per pack (cradle-to-gate)	4.7 kg CO2 eq (Cat B)
Note on PCF category	Category B: PCF value (cradle-to-gate) based on the product weight, approximately calculated and self-declared
Customs tariff number	73269098

Features

EAN	4028177625464
ETIM 9	EC002620
ECLASS 8.0	27189261

Tender text

Support for small appliances

For secure attachment of non-482.6 mm (19 inch)-conforming small appliances such as modems, power packs, routers etc. Angular support for mounting in the free space at the side between the 482.6 mm (19 inch) level and the side panel on L-shaped mounting angles, mounting frames or punched sections.

Attachment of the components and connection cables can be achieved quickly and easily using nylon tape or cable ties. Also suitable for cable routing in the enclosure depth.

Dimensions:

WxHxD 350x150x97 mm

Material:

Sheet steel, zinc-plated, passivated

Supply includes:

Packs of 1

Assembly parts.