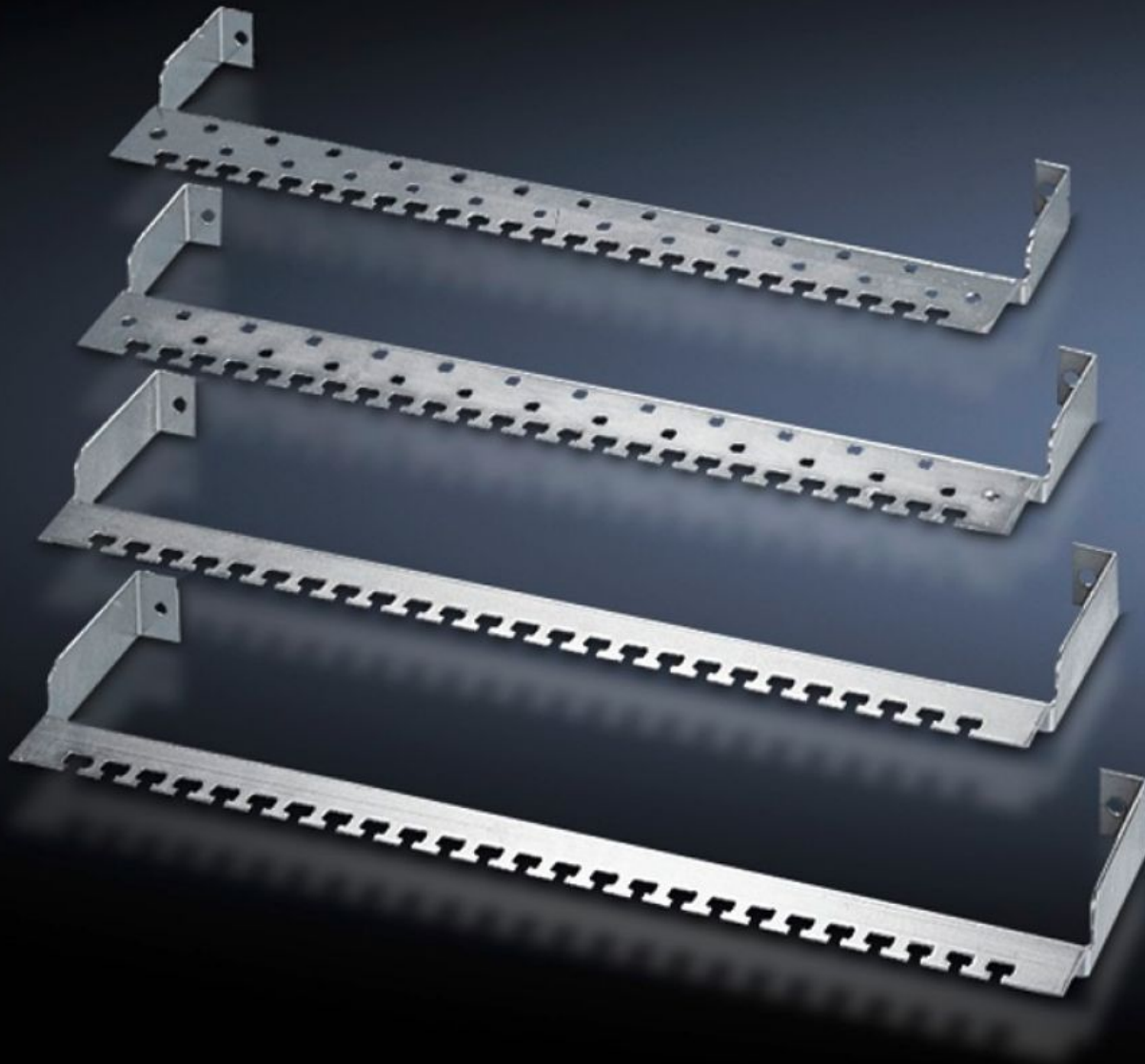


# Rittal – The System.

Faster – better – everywhere.



## DK 7610.000 Cable clamp rail

State: 4.4.2026 (Source: [rittal.com/si-sl](http://rittal.com/si-sl))

ENCLOSURES

POWER DISTRIBUTION

CLIMATE CONTROL

IT INFRASTRUCTURE

SOFTWARE & SERVICES

FRIEDHELM LOH GROUP



# DK 7610.000 - Cable clamp rail for patch panels

To provide strain relief of incoming or outgoing data cables, optionally available with spring brackets for accommodating and contacting the cable screen.

## Features

Model No.	DK 7610.000
Design	without cable screen contact
Product description	To provide strain relief of incoming or outgoing data cables. Optionally available with spring brackets for accommodating and contacting the cable screen. Connection to the patch panel is by means of bolts on the panel itself.
Material	Sheet steel, 2 mm, zinc-plated
Supply includes	Assembly parts
Packs of	1 pc(s).
Net weight	0,4 kg
Gross weight	0,481 kg
Customs tariff number	73269098
ECLASS 8.0	27400604
Product description	DK Cable clamp rail, For Patch-Panel, without cable screen contact

## Tender text

Cable clamp strap version (small)

For fitting to the back of a CMC. The cable can be secured with cable ties or cable clamps.

Material: Sheet steel, zinc-plated, passivated