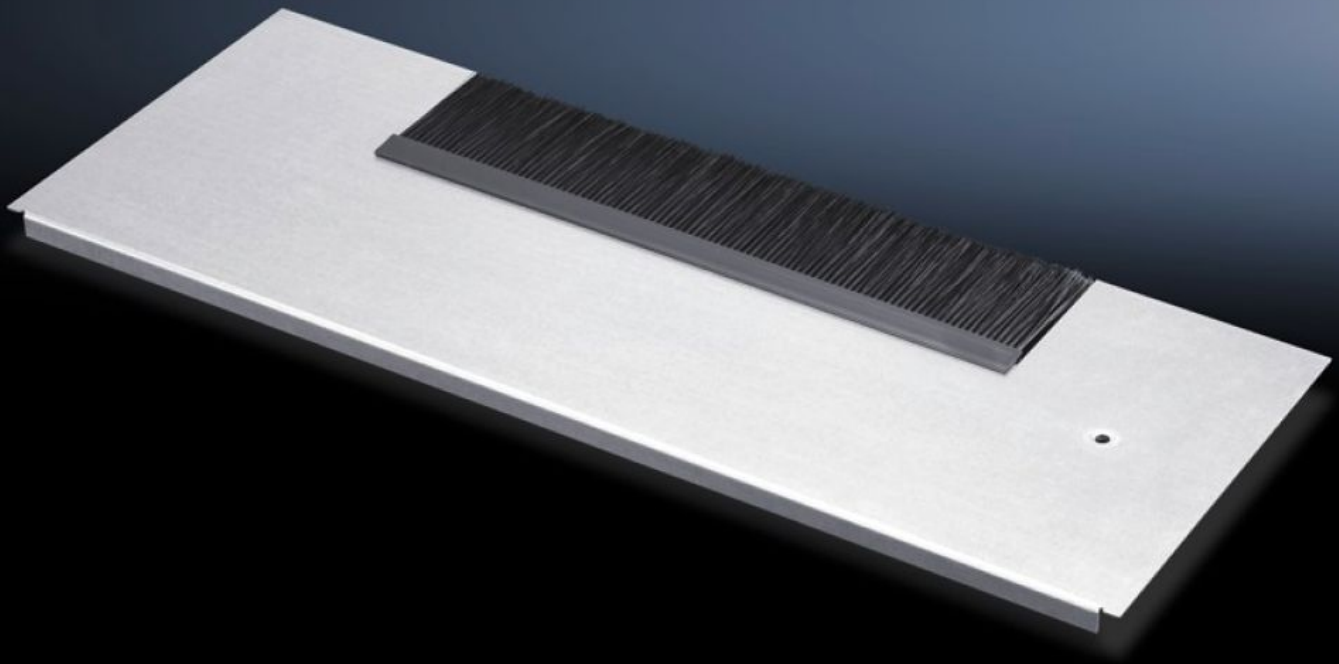


Rittal – The System.

Faster – better – everywhere.



DK 7825.361

Gland plate modules for cable entry

State: 25.6.2025 (Source: [rittal.com/si-sl](https://www.rittal.com/si-sl))

ENCLOSURES

POWER DISTRIBUTION

CLIMATE CONTROL

IT INFRASTRUCTURE

SOFTWARE & SERVICES

FRIEDHELM LOH GROUP



DK 7825.361 - Gland plate modules for cable entry for TS IT, TS, SE, TX CableNet

Gland plate modules for cable entry, for TS, TS-IT, SE for use in the base frame of the network enclosure. Used in exchange for an existing gland plate of the same depth.

Features

Model No.	DK 7825.361
Product description	For simple, sealed cable entry.
Material	Module plate: Sheet steel Brush strip: Plastic, UL 94 HB, halogen-free
Surface finish	Zinc-plated
Note	Several gland module plates need to be combined to close off the base completely in the TS-IT
Dimensions	Depth: 237.5 mm
To fit	Enclosure type: TS IT TS VX SE TX CableNet Width: 600 mm
Packs of	1 pc(s).
Net weight	1.092
Gross weight	1.24
Customs tariff number	73269098
EAN	4028177233331
ETIM 9	EC002620
ECLASS 8.0	27189261

Tender text

Gland plate module, vented
For W: 600 mm,
Depth: 237,5 mm
For TS, TS IT, SE, TX CableNet
For cable entry with brush
Module plate: Sheet steel
Brush strip: UL 94-HB, halogen-free