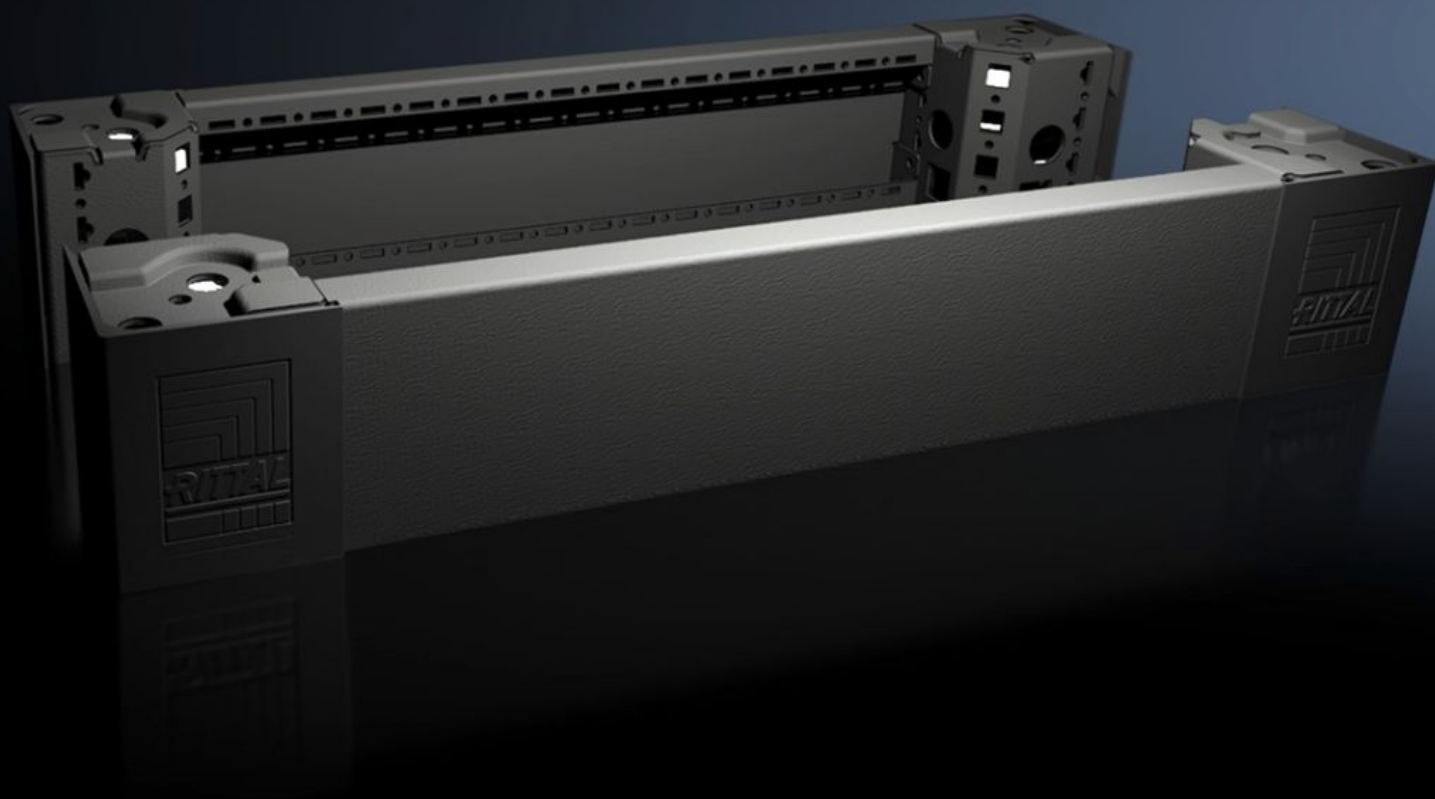


Rittal – The System.

Faster – better – everywhere.



VX 8620.002

Base/plinth corner piece with base/ plinth trim panels, front and rear, 100 mm

State: 7.2.2026 (Source: [rittal.com/si-sl](https://www.rittal.com/si-sl))

ENCLOSURES

POWER DISTRIBUTION

CLIMATE CONTROL

IT INFRASTRUCTURE

SOFTWARE & SERVICES

FRIEDHELM LOH GROUP



VX 8620.002 - Base/plinth corner piece with base/plinth trim panels, front and rear, 100 mm for VX, VX IT, VX SE, TE, TS, TS IT, TP, PC, IW

Base/plinth corner pieces with moulded self-positioning to the bayed enclosure system, for use with or without trim panels depending on the application. Large openings in the base/plinth corner piece for optimum access to the screw-fastening point may be concealed with a corner and baying cover.

Features

| | |
|---------------------|--|
| Model No. | VX 8620.002 |
| Product description | Base/plinth corner pieces with moulded self-positioning to the bayed enclosure system, for use with or without trim panels depending on the application. Large openings in the base/plinth corner piece for optimum access to the screw-fastening point may be concealed with a corner and baying cover. |
| Material | Base/plinth corner piece: Sheet steel Base/plinth trim panel front/rear: Sheet steel Corner and baying cover: Plastic |
| Colour | RAL 9005 |
| Supply includes | 4 base/plinth corner pieces, 100 mm high 4 corner covers 1 baying cover 2 base/plinth trim panels, front/rear, 100 mm high Assembly parts |
| Note | Side base/plinth trim panels finish off a base/plinth unit or provide additional stabilisation between base/plinths or enable interior configuration of the base/plinth |
| Dimensions | Height: 100 mm |
| To fit | Enclosure type: VX Width: = 600 mm |
| Weight/pack | 4,06 kg |

Features

| | |
|-----------------------|---------------|
| Packs of | 2 pc(s). |
| Net weight | 3.6 |
| Gross weight | 4.06 |
| Customs tariff number | 94039910 |
| EAN | 4028177922013 |
| E-Number Sweden | E3465048 |
| ECLASS 8.0 | 27182003 |

Approvals

| | |
|-----------|------------------|
| Approvals | UL + C-UL - FTTA |
|-----------|------------------|