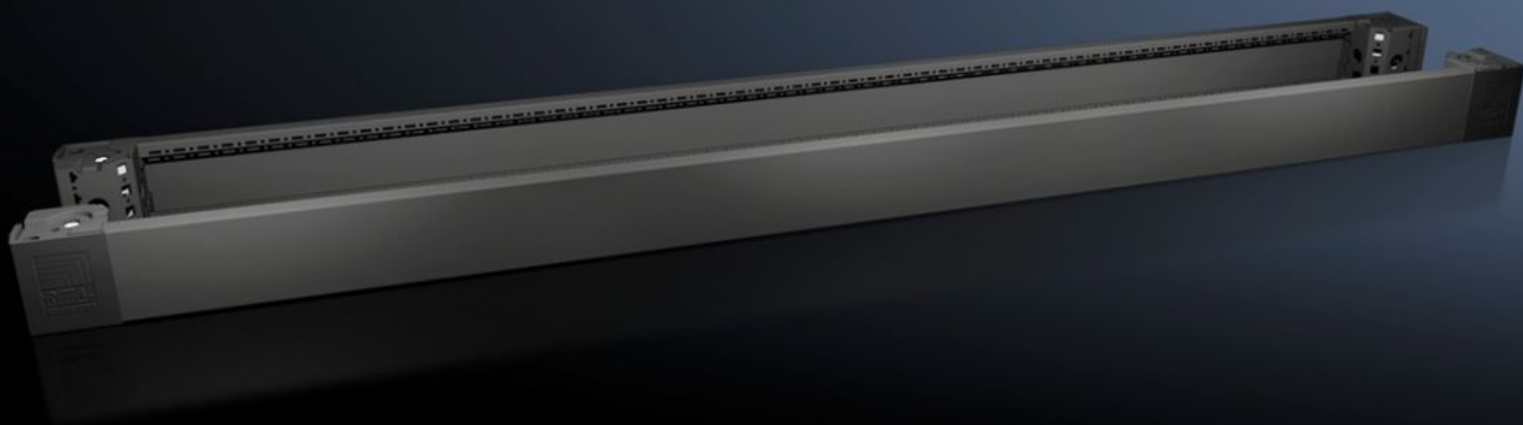
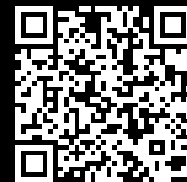


# Rittal – The System.

Faster – better – everywhere.



## VX 8620.009

Base/plinth corner piece with base/  
plinth trim panels, front and rear,  
100 mm

State: 30.8.2025 (Source: [rittal.com/si-sl](https://www.rittal.com/si-sl))

ENCLOSURES

POWER DISTRIBUTION

CLIMATE CONTROL

IT INFRASTRUCTURE

SOFTWARE & SERVICES

FRIEDHELM LOH GROUP



# VX 8620.009 - Base/plinth corner piece with base/plinth trim panels, front and rear, 100 mm for VX, VX IT, VX SE, TE, TS, TS IT, TP, PC, IW

Base/plinth corner pieces with moulded self-positioning to the bayed enclosure system, for use with or without trim panels depending on the application. Large openings in the base/plinth corner piece for optimum access to the screw-fastening point may be concealed with a corner and baying cover.

## Features

Model No.	VX 8620.009
Product description	Base/plinth corner pieces with moulded self-positioning to the bayed enclosure system, for use with or without trim panels depending on the application. Large openings in the base/plinth corner piece for optimum access to the screw-fastening point may be concealed with a corner and baying cover.
Material	Base/plinth corner piece: Sheet steel Base/plinth trim panel front/rear: Sheet steel Corner and baying cover: Plastic
Colour	RAL 9005
Supply includes	4 base/plinth corner pieces, 100 mm high 4 corner covers 1 baying cover 2 base/plinth trim panels, front/rear, 100 mm high Assembly parts
Note	Side base/plinth trim panels finish off a base/plinth unit or provide additional stabilisation between base/plinths or enable interior configuration of the base/plinth
Dimensions	Height: 100 mm
To fit	Enclosure type: VX Width: = 1,800 mm
Weight/pack	8,55 kg

# Features

Packs of	2 pc(s).
Net weight	8.076
Gross weight	8.62
Customs tariff number	94039910
EAN	4028177922082
E-Number Sweden	E3465053
ECLASS 8.0	27182003

# Approvals

Approvals	UL + C-UL - FTTA
-----------	------------------