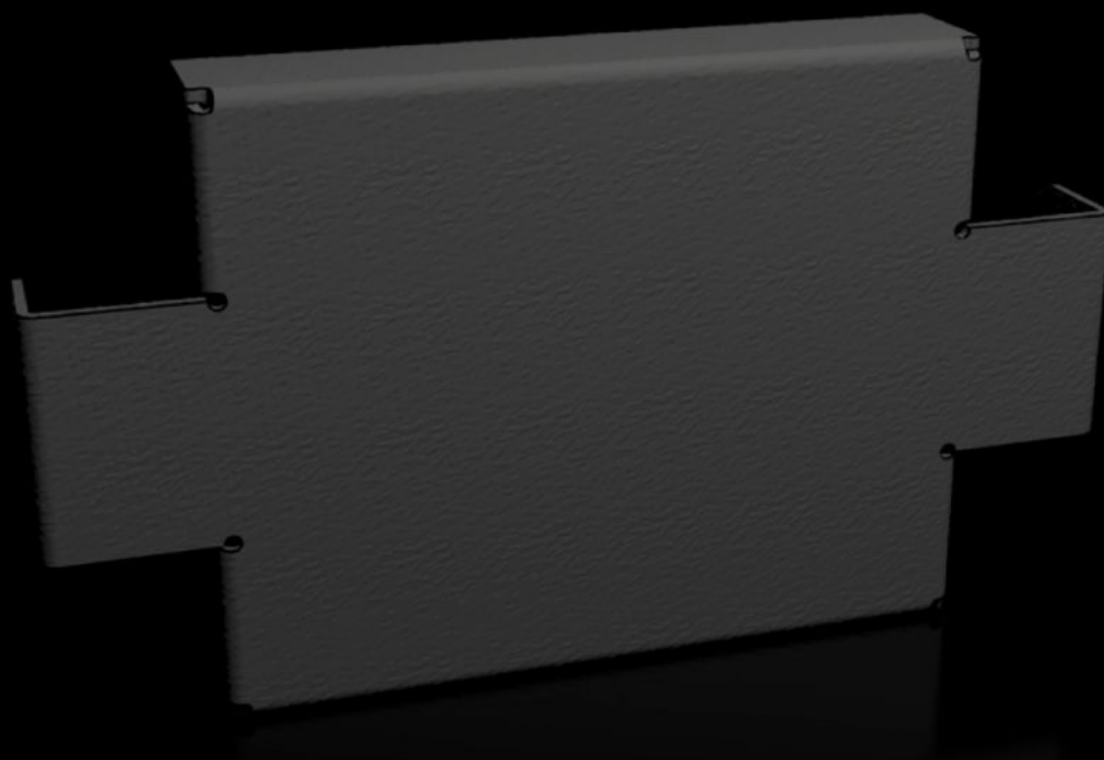


# Rittal – The System.

Faster – better – everywhere.



## VX 8620.030

# Obrobe podnožja/podstavka, stranske, 100 mm

State: 21.6.2026 (Source: [rittal.com/si-sl](http://rittal.com/si-sl))

ENCLOSURES

POWER DISTRIBUTION

CLIMATE CONTROL

IT INFRASTRUCTURE

SOFTWARE & SERVICES

FRIEDHELM LOH GROUP



# VX 8620.030 - Obrobe podnožja/podstavka, stranske, 100 mm za VX sistem podnožja/podstavka, jeklena pločevina

Base/plinth trim panels are used in the depth to finish off a base/plinth unit at the sides. The trim panel may be used between two bayed enclosures to stabilise the base/plinth corner pieces. The 100 mm high trim panels may also be used in a 200 mm high base/plinth and combined.

## Features

Št. Modela	VX 8620.030
Material	Jeklena pločevina
Barva	RAL 9005
Obseg dobave	Sestavni deli
Mere	Višina: 100 mm
Primerno za	Globina: = 300 mm
Teža/pakiranje	0,614 kg
Paketi	2 pc(s).
Neto teža	0,6 kg
Bruto teža	0,614 kg
Carinska tarifna številka	94039910
ECLASS 8.0	27182003
Opis izdelka	VX Base/plinth trim panel, side, H: 100 mm, for D: 300 mm, sheet steel

## Approvals

Approvals	UL + C-UL - FTTA
-----------	------------------