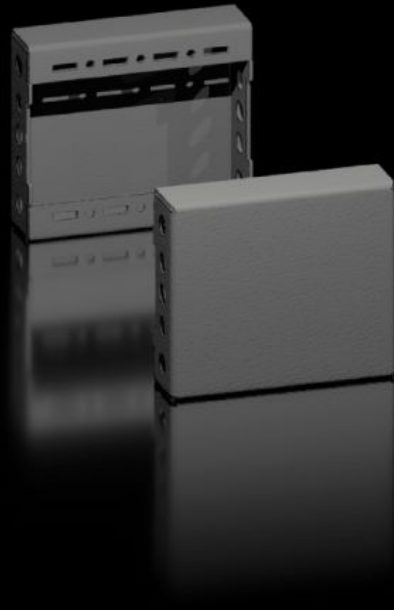


Rittal – The System.

Faster – better – everywhere.



VX 8660.030

Base/plinth trim panels, side

State: 16.4.2026 (Source: [rittal.com/si-sl](https://www.rittal.com/si-sl))

ENCLOSURES

POWER DISTRIBUTION

CLIMATE CONTROL

IT INFRASTRUCTURE

SOFTWARE & SERVICES

FRIEDHELM LOH GROUP



VX 8660.030 - Base/plinth trim panels, side for base/plinth system VX, sheet steel

To finish off a base/plinth unit at the sides and for additional stability or interior configuration of bayed base/plinths. One 200 mm high or two 100 mm high trim panels may optionally be fitted on 200 mm high base/plinths.



Features

| | |
|-----------------|---|
| Model No. | VX 8660.030 |
| Design | Solid |
| Material | Sheet steel |
| Colour | RAL 9005 |
| Supply includes | Assembly parts |
| Dimensions | Height: 100 mm |
| To fit | Enclosure type: VX VX IT VX SE TX CableNet TS TS IT TP PC IW CX Depth: = 300 mm |

Features

| | |
|-------------------------------|--|
| Type rating to UL 50E | Type 1 Type 12 |
| Weight/pack | 0,7 kg |
| Packs of | 2 pc(s). |
| To fit | for base/plinth system VX, sheet steel |
| Net weight | 0,6 kg |
| Gross weight | 0,7 kg |
| PCF per pack (cradle-to-gate) | 2.7 kg CO2 eq (Cat B) |
| Note on PCF category | Category B: PCF value (cradle-to-gate) based on the product weight, approximately calculated and self-declared |
| Customs tariff number | 94039910 |
| ETIM 9 | EC000721 |
| ETIM 8 | EC000721 |
| ECLASS 8.0 | 27182003 |
| Product description | VX base/plinth trim panel, side, H: 100 mm, for D: 300 mm, sheet steel |

Approvals

| | |
|--------------|-----------------|
| Explanations | PCF-declaration |
|--------------|-----------------|