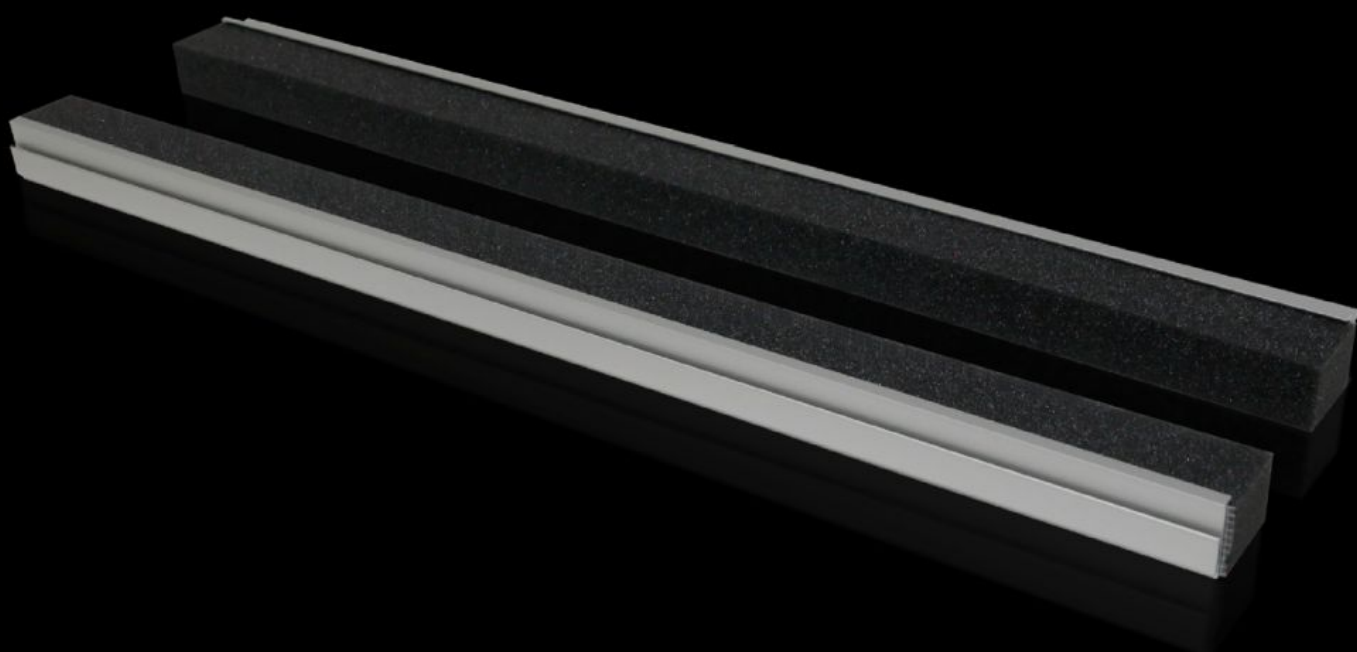


Rittal – The System.

Faster – better – everywhere.



TS 8802.125

Section for cable entry, rear

State: 25.8.2025 (Source: [rittal.com/si-sl](https://www.rittal.com/si-sl))

ENCLOSURES

POWER DISTRIBUTION

CLIMATE CONTROL

IT INFRASTRUCTURE

SOFTWARE & SERVICES

FRIEDHELM LOH GROUP



TS 8802.125 - Section for cable entry, rear for TS, TP

For mounting directly onto the base opening.

Features

Model No.	TS 8802.125
Product description	For sealing the cable entry at the base opening.
Benefits	Particularly well-suited to cables with identical cross-sections When installing the mounting plate in the rearmost position, the cables may be routed directly with no large radii.
Technical specifications	Foam rubber cable clamp strip: Cross-section: 30 x 25 mm
Applications	Mount directly on the base opening/base tray and gland plate
Material	Extruded aluminium section Foam rubber cable clamp strip: PU foam
Supply includes	Plug-in sections, incl. foam rubber clamp strip
Note	2 pc(s). are sufficient for one base opening up to an enclosure width of 800 mm From an enclosure width of 1000 mm, two base openings are provided. 4 packs per enclosure may be fitted
To fit	Enclosure type: TS: = 1,200 mm Enclosure type: TP
IP protection category to IEC 60529	IP 55 if installed correctly
Packs of	4 pc(s).
Net weight	0.384
Gross weight	0.433
Customs tariff number	76042990
EAN	4028177496385
ETIM 9	EC002624
ECLASS 8.0	27189265