

# Rittal – The System.

Faster – better – everywhere.



## GA 9105.210

## Cast aluminium enclosures GA

State: 4.5.2025 (Source: [rittal.com/si-sl](http://rittal.com/si-sl))

ENCLOSURES

POWER DISTRIBUTION

CLIMATE CONTROL

IT INFRASTRUCTURE

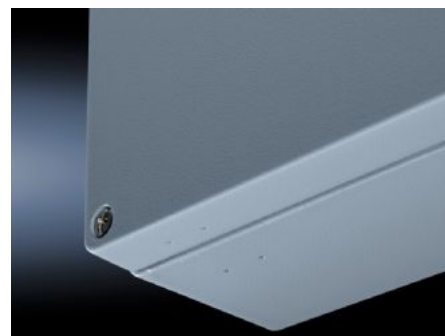
SOFTWARE & SERVICES

FRIEDHELM LOH GROUP



# GA 9105.210 - Cast aluminium enclosures GA

Spray-finished cast aluminium enclosure. Protection category IP 66.



## Features

Model No.	GA 9105.210
Material	Enclosure: Cast aluminium Cover: Cast aluminium, all-round CR cellular rubber cord seal
Surface finish	Textured paint
Colour	RAL 7001
Supply includes	Enclosure with cover Cover screws, captive Screws for attaching support rails Screw for connection of the PE conductor
Protection category NEMA	NEMA 4
Protection category to IEC 60 529	IP 66
IK Code	IK08
Dimensions	Width: 125 mm Height: 80 mm Depth: 58 mm
Basic material	Cast aluminium
Packs of	1 pc(s).
Net weight	0.43

# Features

---

Gross weight	0.47
Customs tariff number	84879090
EAN	4028177145375
E-Number Sweden	E3404584
ETIM 9	EC000261
ECLASS 8.0	27180101

# Approvals

---

Explanations	Declaration of conformity Declaration of conformity UK
--------------	---