

# Rittal – The System.

Faster – better – everywhere.



## SV 9340.460 OM adaptors

State: 17.4.2026 (Source: [rittal.com/si-sl](http://rittal.com/si-sl))

ENCLOSURES

POWER DISTRIBUTION

CLIMATE CONTROL

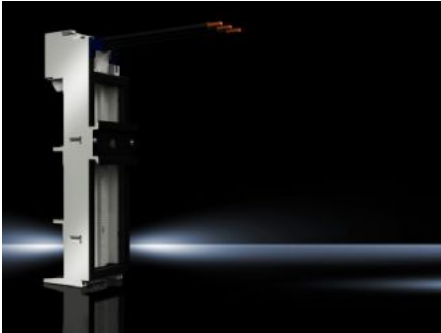
IT INFRASTRUCTURE

SOFTWARE & SERVICES

FRIEDHELM LOH GROUP



# SV 9340.460 - OM adaptors with connection cables



## Features

Model No.	SV 9340.460
Design	With connection cable
Material	Polyamide Fire protection corresponding to UL 94-V0
Colour	Chassis: RAL 7035
Connection cables (AWG)	AWG 10
Rated current max.	32 A
Rated operating voltage	690 V, 3~
Electrical ratings UL (SCCR)	30 kA - 600 V, Fuse Class K5 max. 60 A, JDDZ/7 30 kA - 480 V, Combination Motor Controller max. 63 A, NKJH/7 65 kA - 600 V, Fuse Class J max. 60 A, JDDZ/7 65 kA - 480 V, Manual Motor Controller max. 63 A, NLRV/7 65 kA - 480 V, Combination Motor Controller max. 63 A, NKJH/7
For bar systems with centre-to-centre spacing	60 mm
Length of connection cable	130 mm
Support rail type	Support frame, 1 x TS 55D
Note	The technical data may vary for UL applications
Number of poles	3-pole
Dimensions	Width: 55 mm Height: 208 mm

# Features

Support rails Qty/height	1 / 10 mm
To fit busbars	Height: 5, 10 mm
Support frame (W x H)	55 mm x 170 mm
Approvals	UL
Packs of	1 pc(s).
Net weight	0,32 kg
Gross weight	0,334 kg
Copper weight (kg per piece)	0,074
Customs tariff number	85369095
ETIM 9	EC001531
ECLASS 8.0	27370304
Product description	SV OM adaptor, 32 A, 690 V, 3-pole, connection cable AWG 10, WH: 55x208 mm, support frame, support rail TS 55D

# Approvals

Approvals	ABS DNV-GL Lloyds Register of Shipping UL + C-UL (listed)
Explanations	Declaration of conformity Declaration of conformity UK

# Tender text

OM adaptor 32 A

OM adaptor 32 A with connection cable, 3-pole,  
for busbar thickness 5/10 mm and PLS 800/1600

Technical specifications

Connection cable: AWG 10 / approx. 6 qmm

Support frame: 55 x 170 mm

PinBlock: -

Support rail: 1

System:

Rittal RiLine60