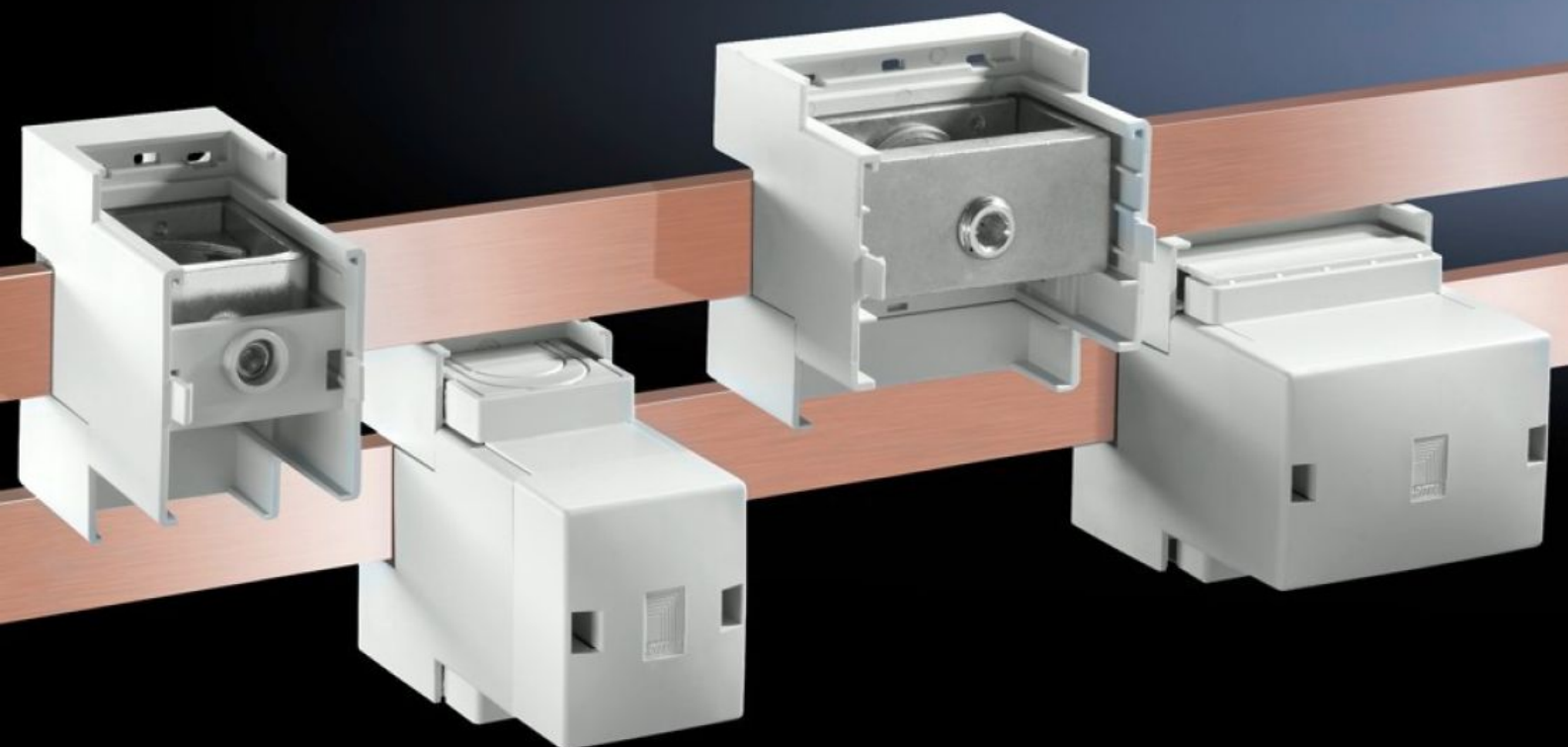


# Rittal – The System.

Faster – better – everywhere.



## SV 9342.321 Connection block

State: 11.9.2025 (Source: [rittal.com/si-sl](https://www.rittal.com/si-sl))

ENCLOSURES

POWER DISTRIBUTION

CLIMATE CONTROL

IT INFRASTRUCTURE

SOFTWARE & SERVICES

FRIEDHELM LOH GROUP



# SV 9342.321 - Connection block

For connecting round conductors and laminated copper bars. Suitable for busbars 12 x 5 to 30 x 10 mm and PLS 800/1600.

## Features

Model No.	SV 9342.321
Product description	Suitable for busbars 12 x 5 to 30 x 10 mm and PLS 800/1600.
Material	Punched section: Polyamide Cover: ABS Fire protection corresponding to UL 94-V0
Colour	RAL 7035
Supply includes	3 terminals including cover
Clamping area for laminated copper bars with 5 mm bar thickness (W x H)	65 x 27 mm
Clamping area for laminated copper bars with 10 mm bar thickness (W x H)	65 x 22 mm
Cable outlet	Top/bottom
Rated current max.	1.600 A
Electrical ratings UL (SCCR)	65 kA - 480 V, circuit breaker max. 1200 A, DIVQ/7 65 kA - 600 V, Fuse Class L max. 1600 A, JDDZ/7
Note	With overvoltage category III, a rated operating voltage of 1,000 V (AC) is achieved. When using the terminal on 2-pole busbar systems (SV 9340.040), the terminal must be rotated through 180° for connection to the PE busbar.
Dimensions	Width: 85 mm Height: 88 mm
Packs of	3 pc(s).
Net weight	2.1

## Features

Gross weight	2.197
Copper weight (kg per piece)	0.136
Customs tariff number	85369095
EAN	4028177625266
ETIM 9	EC002270
ECLASS 8.0	27400613

## Approvals

Approvals	ABS Lloyds Register of Shipping UL + C-UL (listed)
Explanations	Declaration of conformity Declaration of conformity UK

## Tender text

Terminal block 1-pole  
Terminal block 1-pole, cable outlet top / bottom  
for busbar thickness 5 / 10 mm and PLS 800 / 1600  
Type of connection  
Clamping area for laminated copper bars for  
5 mm bar thickness: 65 x 27 mm  
Clamping area for lamintate copper bars for  
10 mm bar thickness: 65 x 22 mm  
System:  
Rittal RiLine60