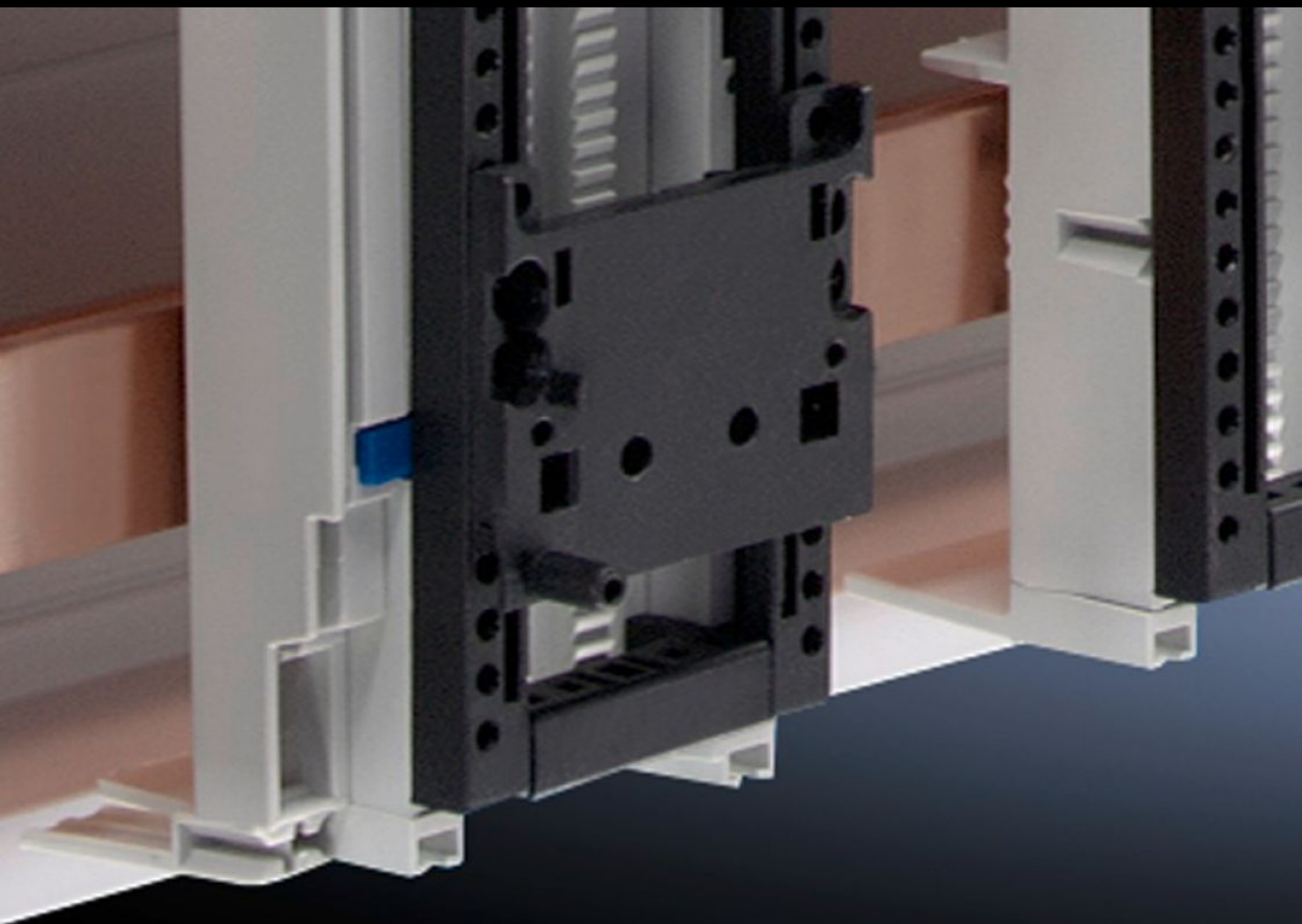


Rittal – The System.

Faster – better – everywhere.



SV 9342.810 PinBlock

State: 18.8.2025 (Source: [rittal.com/si-sl](https://www.rittal.com/si-sl))

ENCLOSURES

POWER DISTRIBUTION

CLIMATE CONTROL

IT INFRASTRUCTURE

SOFTWARE & SERVICES

FRIEDHELM LOH GROUP



SV 9342.810 - PinBlock for support frames

For reliable attachment and positioning of the contactor on motor starter combinations.



Features

Model No.	SV 9342.810
Product description	For reliable attachment and positioning of the contactor on motor starter combinations. Simple clip-on mounting onto the support frame. Individual vertical positioning is achieved by relocating the PinBlock.
Material	Polyamide
Colour	RAL 9005
Support frame width	55 mm
Note	UL approval in conjunction with OM adaptor/support
Packs of	5 pc(s).
Net weight	0.03
Gross weight	0.039
Customs tariff number	39269097
EAN	4028177503854
ETIM 9	EC002270
ECLASS 8.0	27400613