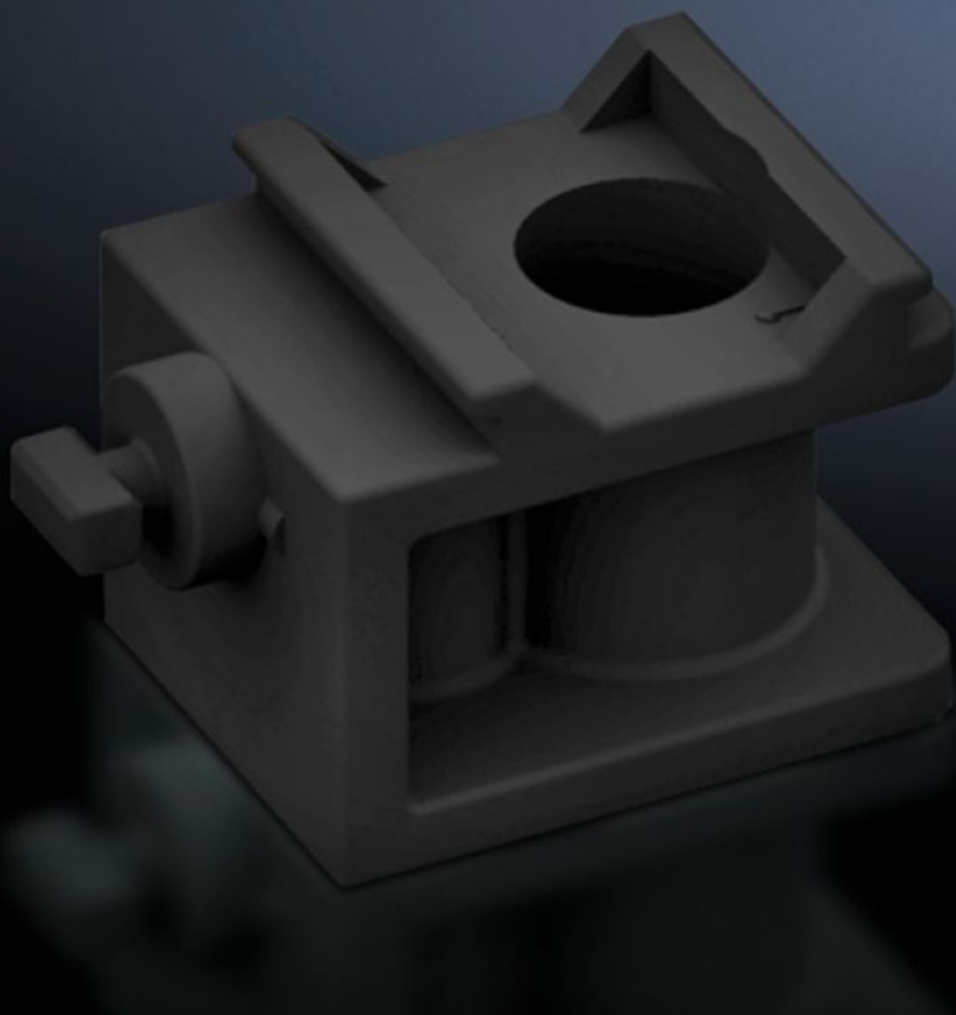


# Rittal – The System.

Faster – better – everywhere.



## SV 9346.430 Support bracket

State: 29.6.2025 (Source: [rittal.com/si-sl](https://www.rittal.com/si-sl))

ENCLOSURES

POWER DISTRIBUTION

CLIMATE CONTROL

IT INFRASTRUCTURE

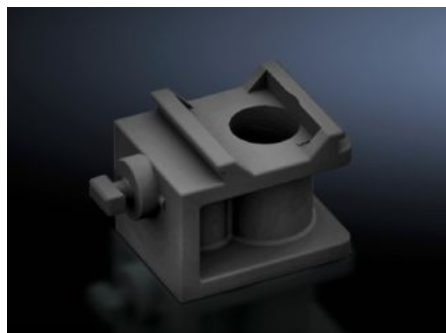
SOFTWARE & SERVICES

FRIEDHELM LOH GROUP



# SV 9346.430 - Support bracket for NH slimline fuse-switch disconnectors

For NH slimline fuse-switch disconnectors size 00 to 3. For attaching a customised contact hazard protection cover. May be attached to the left and right of the disconnector.



## Features

Model No.	SV 9346.430
Applications	For optional attachment of a customised contact hazard protection cover e.g. for special applications in conjunction with distribution enclosures. The support brackets may be attached to the left and right of the strip chassis.
Packs of	4 pc(s).
Net weight	0.012
Gross weight	0.02
Customs tariff number	73182900
EAN	4028177631786
ETIM 9	EC001900
ECLASS 8.0	27400613