

Rittal – The System.

Faster – better – everywhere.



RX 9360.241

RiLineX connection adaptor

State: 21.5.2026 (Source: rittal.com/si-sl)

ENCLOSURES

POWER DISTRIBUTION

CLIMATE CONTROL

IT INFRASTRUCTURE

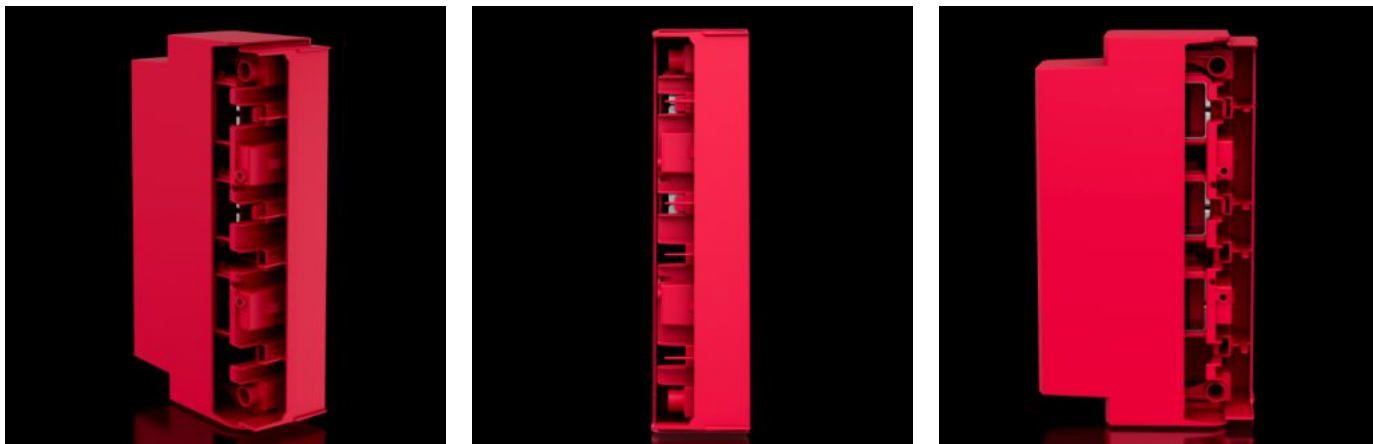
SOFTWARE & SERVICES

FRIEDHELM LOH GROUP



RX 9360.241 - RiLineX connection adaptor

RiLineX connection adaptor for side infeed from the left or right. For use with vertical mounting of the board or as a corner connector using laminated connection straps. It is also ideal as a T-connection between horizontal and vertical systems. It must not be used with other busbar systems such as RiLine60.



Features

Št. Modela	RX 9360.241
Prednosti	Mounting on the busbar system and cable connection with just one screw Vertical variant for side infeed to the board
Material	Poliamid (PA 6) Protipožarna zaščita v skladu z UL 94
Barva	RAL 35745
Nazivni tok (maks.)	432 A
Maks. nazivni tok	710 A
Rated current of round conductor	710 A
Rated current of round conductor (UL)	630 A
Rated current of laminated copper bar	950 A
Rated current of laminated copper bar (UL)	910 A

Features

Električne nazivne vrednosti UL (SCCR)	27,5 kA - 600 V, RMS, unprotected 100 kA - 480 V, circuit breaker max. 800 A, DIVQ/7 100 kA - 600 V, Fuse Class L max. 1200 A, JDDZ/7
Kabelska vtičnica	In an axial direction to the board
Za sisteme palic z razmakom med središči	60 mm
Število polov	3-pole
Za namestitev sistema zbiralnih sponk	RiLineX RiLine60
Mere	Širina: 57,8 mm Višina: 239,4 mm Globina: 135,6 mm
Priklop okroglih vodnikov	150 - 300 mm ²
Vpenjalna površina za laminirane bakrene palice (Š x V)	32 x 20 mm
Za namestitev zbiralnih sponk	15 x 5/10 20 x 5/10 30 x 5/10
Rated voltage	1.000 V AC 1.500 V DC 600 V AC (UL) 600 V DC (UL)
Kategorija prenapetosti	4
Stopnja kontaminacije	3
Standardi	IEC/EN 61439-1 UL 508
Nazivna impulzna vzdržna napetost U _{imp}	12 kV
Rated insulation voltage U _i	1.000 V
Izguba toplote maks.	50 W
IP razred zaščite po IEC 60 529	IP 2XB
Maximum operating air humidity	90 %

Features

Delovno temperaturno območje	-5 °C...55 °C
Temperaturno območje shranjevanja	-25 °C...75 °C
Vlažnost okolice (brez kondenzacije)	10...90 %
Paketi	1 pc(s).
Neto teža	1 kg
Bruto teža	1,185 kg
Carinska tarifna številka	85369010
ETIM 9	EC001531
Opis izdelka	RiLineX connection adaptor for side infeed from the left or right. For use with vertical mounting of the board or as a corner connector using laminated connection straps. It is also ideal as a T-connection between horizontal and vertical systems. It must not be used with other busbar systems such as RiLine60.

Approvals

Approvals	UL + C-UL (listed)
Explanations	Declaration of conformity PCF-declaration