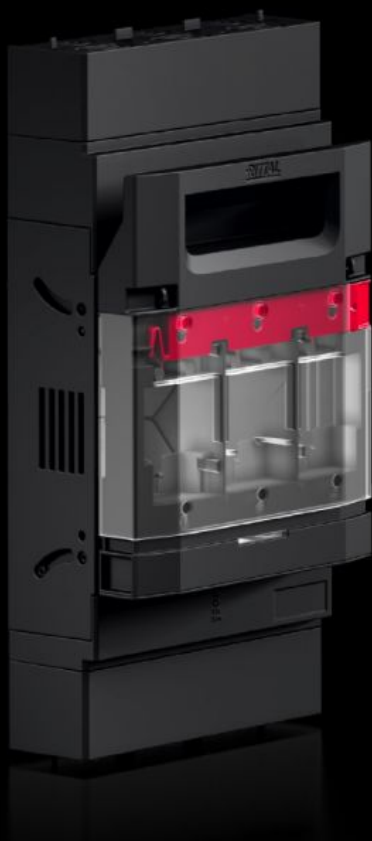


Rittal – The System.

Faster – better – everywhere.



RX 9362.115

RiLineX Fuse-switch disconnecter

State: 20.7.2025 (Source: [rittal.com/si-sl](https://www.rittal.com/si-sl))

ENCLOSURES

POWER DISTRIBUTION

CLIMATE CONTROL

IT INFRASTRUCTURE

SOFTWARE & SERVICES

FRIEDHELM LOH GROUP



RX 9362.115 - RiLineX Fuse-switch disconnecter

RiLineX NH fuse-switch disconnecter in size 1 for 60 mm busbar systems. The cover can be locked and prepared for a lead seal. It also has visual fuse monitoring. Integrated measuring points on the cover ensure safe voltage testing. NH fuse-switch disconnecters have a park position to make maintenance easier. Size M10 screw terminal connection. Cable outlet can be at the top or bottom, as required. Includes electronic fuse monitoring.



Features

Model No.	RX 9362.115
Benefits	Cover: can be locked and prepared for a lead seal Voltage test through separate opening Snap-on mounting up to 250 A and simple adjustment to busbar thickness 5/10 mm Tool-free changeover of the cable outlet Park position for simpler maintenance work High rated voltage 800 V ready All variants also available with electronic fuse monitoring
Material	Polyamide (PA 6) Fire protection corresponding to UL 94 Contact tracks: Electrolytic copper, silver-plated
Colour	RAL 9005 RAL 35745
Supply includes	Connectors for electronic fuse monitoring
For bar systems with centre-to-centre spacing	60 mm
Cable outlet	Top/bottom
Type of electrical connection	Screw M10

Features

Rated operating current max.	250 A
Rated operating voltage	690 V AC
For NH size	1
Test specification	IEC/DIN EN 60 947-3 DIN EN 60 269-2 (fuse inserts)
Dimensions	Width: 182 mm Height: 349 mm Depth: 117 mm
Operating temperature range	-5 °C...35 °C
Storage temperature range	-25 °C...70 °C
To fit busbars	15 x 5/10 20 x 5/10 30 x 5/10
To fit busbar system	RiLineX RiLine60
Number of poles	3-pole
Utilisation category	AC-23B (400 V/100 A) AC-22B (500 V/100 A) DC-22B (250 V/100 A) DC-21B (440 V/100 A)
Contamination level	3
with electronic fuse monitoring	Yes
IP protection category to IEC 60 529	IP 2XB
Power dissipation (max.)	51 W
Packs of	1 pc(s).
Net weight	2.7
Gross weight	2.728
Copper weight (kg per piece)	0.8
Customs tariff number	85369095

Features

ETIM 9	EC001040
--------	----------

Approvals

Explanations	Declaration of conformity
--------------	---------------------------