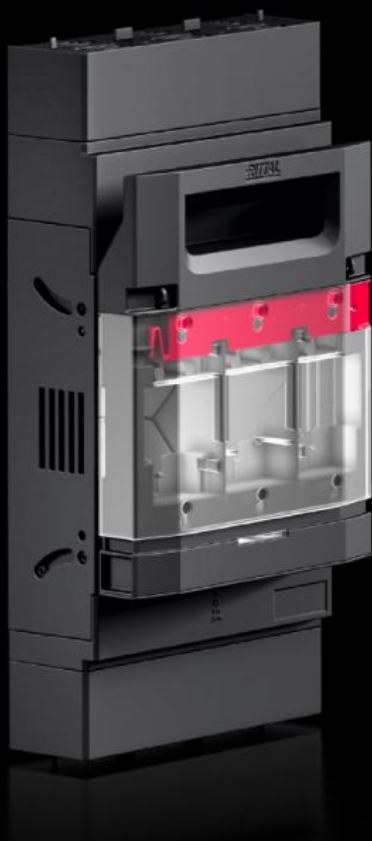


# Rittal – The System.

Faster – better – everywhere.



## RX 9362.315

## RiLineX NH fuse-switch disconnecter

State: 7.9.2025 (Source: [rittal.com/si-sl](https://www.rittal.com/si-sl))

ENCLOSURES

POWER DISTRIBUTION

CLIMATE CONTROL

IT INFRASTRUCTURE

SOFTWARE & SERVICES

FRIEDHELM LOH GROUP



# RX 9362.315 - RiLineX NH fuse-switch disconnecter

RiLineX NH fuse-switch disconnecter in size 3 for 60 mm busbar systems. The cover can be locked and prepared for a lead seal. It also has visual fuse monitoring. Integrated measuring points on the cover ensure safe voltage testing. NH fuse-switch disconnecters have a park position to make maintenance easier. Size M10 screw terminal connection. Cable outlet can be at the top or bottom, as required. Includes electronic fuse monitoring.

## Features

Model No.	RX 9362.315
Benefits	Cover: can be locked and prepared for a lead seal Voltage test through separate opening Snap-on mounting up to 250 A and simple adjustment to busbar thickness 5/10 mm Tool-free changeover of the cable outlet Park position for simpler maintenance work High rated voltage 800 V ready All variants also available with electronic fuse monitoring
Material	Polyamide (PA 6) Fire protection corresponding to UL 94 Contact tracks: Electrolytic copper, silver-plated
Colour	RAL 9005 RAL 35745
Supply includes	Connectors for electronic fuse monitoring
For bar systems with centre-to-centre spacing	60 mm
Cable outlet	Top/bottom
Type of electrical connection	Screw M10
Rated operating current max.	630 A
Rated operating voltage	690 V AC
For NH size	3
Test specification	IEC/DIN EN 60 947-3 DIN EN 60 269-2 (fuse inserts)

# Features

Dimensions	Width: 250 mm Height: 349 mm Depth: 135 mm
Operating temperature range	-5 °C...35 °C
Storage temperature range	-25 °C...70 °C
To fit busbars	15 x 5/10 20 x 5/10 30 x 5/10
To fit busbar system	RiLineX RiLine60
Number of poles	3-pole
Contamination level	3
with electronic fuse monitoring	Yes
IP protection category to IEC 60 529	IP 2XB
Power dissipation (max.)	101 W
Packs of	1 pc(s).
Net weight	4.7
Gross weight	4.83
Copper weight (kg per piece)	2.255
Customs tariff number	85369095
ETIM 9	EC001040

# Approvals

Explanations	Declaration of conformity
--------------	---------------------------