

Rittal – The System.

Faster – better – everywhere.



RX 9365.724

RiLineX support rail for component adaptor

State: 22.5.2026 (Source: rittal.com/si-sl)

ENCLOSURES

POWER DISTRIBUTION

CLIMATE CONTROL

IT INFRASTRUCTURE

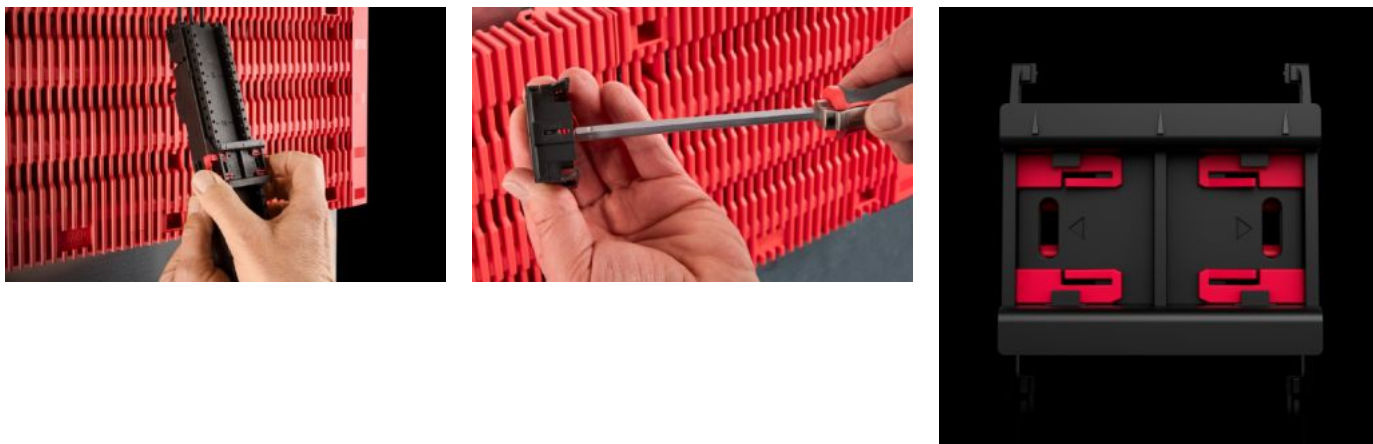
SOFTWARE & SERVICES



FRIEDHELM LOH GROUP

RX 9365.724 - RiLineX support rail for component adaptor

RiLineX support rails for component adaptors in width 45 mm for 60 mm busbar systems. For mounting top-mounted equipment with snap fastening on component adaptors and component supports.



Features

Št. Modela	RX 9365.724
Zasnova	Z zaklepno sponko
Material	Poliamid (PA 6) Protipožarna zaščita v skladu z UL 94
Barva	RAL 9005 RAL 35745
Za model št.	9360710 9360720 9360730
Mere	Širina: 45 mm Višina: 10 mm
Paketi	8 pc(s).
Neto teža	0,064 kg
Bruto teža	0,095 kg
PCF na paket (od zibelke do vrat)	0,43
Carinska tarifna številka	39269097

Features

ETIM 9

EC001285

Opis izdelka

RiLineX support rails for component adaptors in width 45 mm for 60 mm busbar systems. For mounting top-mounted equipment with snap fastening on component adaptors and component supports.

Approvals

Explanations

Declaration of conformity
PCF-declaration