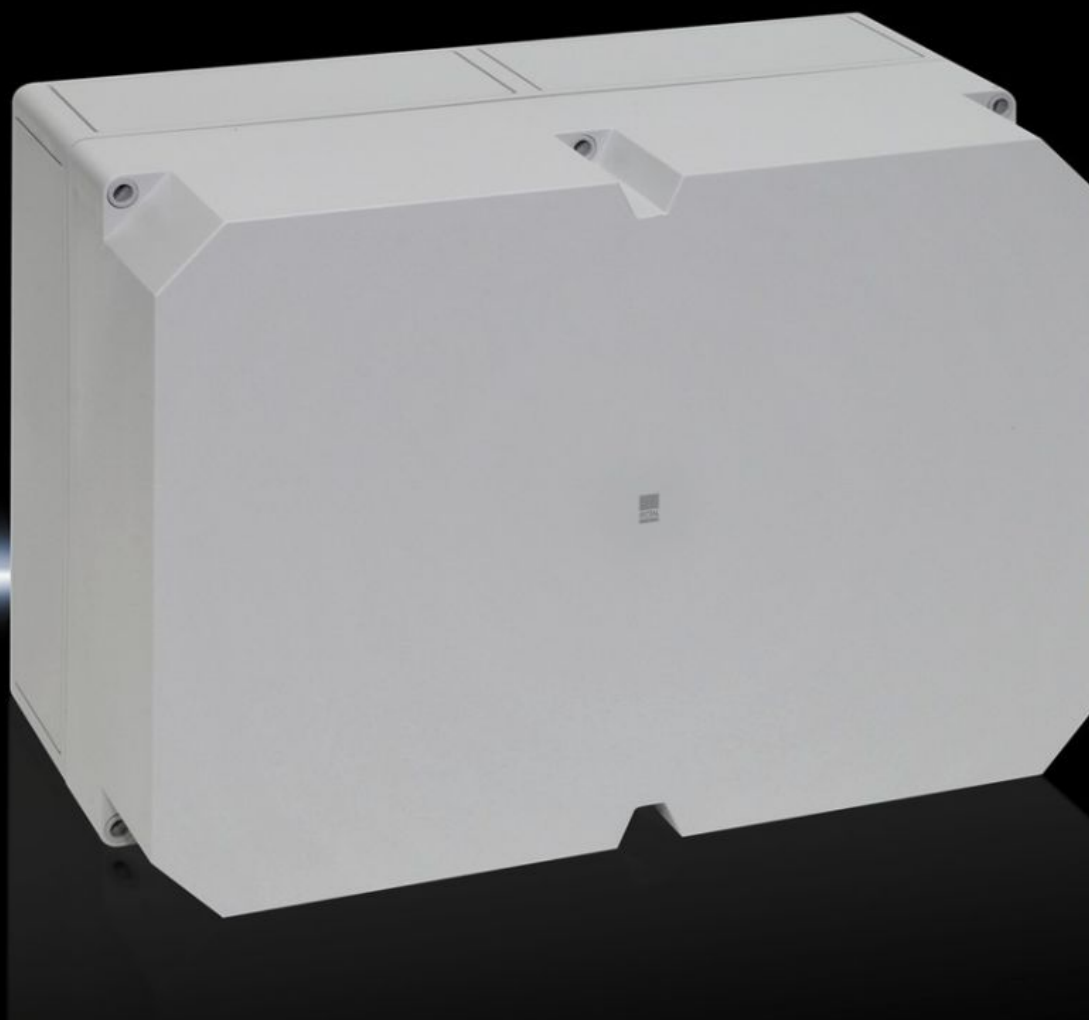


Rittal – The System.

Faster – better – everywhere.



PK 9524.000

Polycarbonate enclosures PK

State: 5.8.2025 (Source: [rittal.com/si-sl](https://www.rittal.com/si-sl))

ENCLOSURES

POWER DISTRIBUTION

CLIMATE CONTROL

IT INFRASTRUCTURE

SOFTWARE & SERVICES

FRIEDHELM LOH GROUP



PK 9524.000 - Polycarbonate enclosures PK without knockouts

Wall-mounted enclosure of fibreglass-reinforced polycarbonate. Protection category IP 66. Covers feature quick-release fasteners for speedy maintenance. Self-extinguishing material for safety.



Features

Model No.	PK 9524.000
Design	PK enclosure with solid cover
Product description	Use within the ambient temperature range: -35 °C...+80 °C. The specified temperatures may be limited by the installed equipment.
Material	Enclosure: Fibreglass-reinforced polycarbonate Cover grey: Fibreglass-reinforced polycarbonate, all-round foamed-in PU seal Cover screws: Polyamide Insulating bungs: Polyethylene
Colour	RAL 7035
Supply includes	Enclosure with cover Cover screws Insulating bungs for wall mounting screws
Protection category NEMA	NEMA 4X
Protection category to IEC 60 529	IP 66
IK Code	IK08

Features

Dimensions	Width: 360 mm Height: 254 mm Depth: 165 mm
Operating temperature range	-35 °C...80 °C
Basic material	Polycarbonate
Packs of	1 pc(s).
Net weight	1.796
Gross weight	2.02
Customs tariff number	94037000
EAN	4028177139893
E-Number Sweden	E3404599
ETIM 9	EC000261
ECLASS 8.0	27180101

Approvals

Approvals	C-UL DNV-GL UL
Explanations	Declaration of conformity

Tender text

Polycarbonate Housings with knockouts

Polycarbonate enclosure with solid cover without knockouts
Enclosure: Fibreglass-reinforced polycarbonate
without knockouts for cable entry
Cover: Fibreglass-reinforced polycarbonate
all-round foamed-in PU seal

Cover screws: Polyamide

Insulating bungs: Polyethylene

Supply includes: Cover screws

Insulating bungs for wall mounting screws

Accessories: Wall mounting bracket

Protection category to IEC 60 529: IP 66

Protection category NEMA: NEMA 4X

Colour: similar to RAL 7035

Dimensions (W x H x T): 360 x 254 x 165 mm