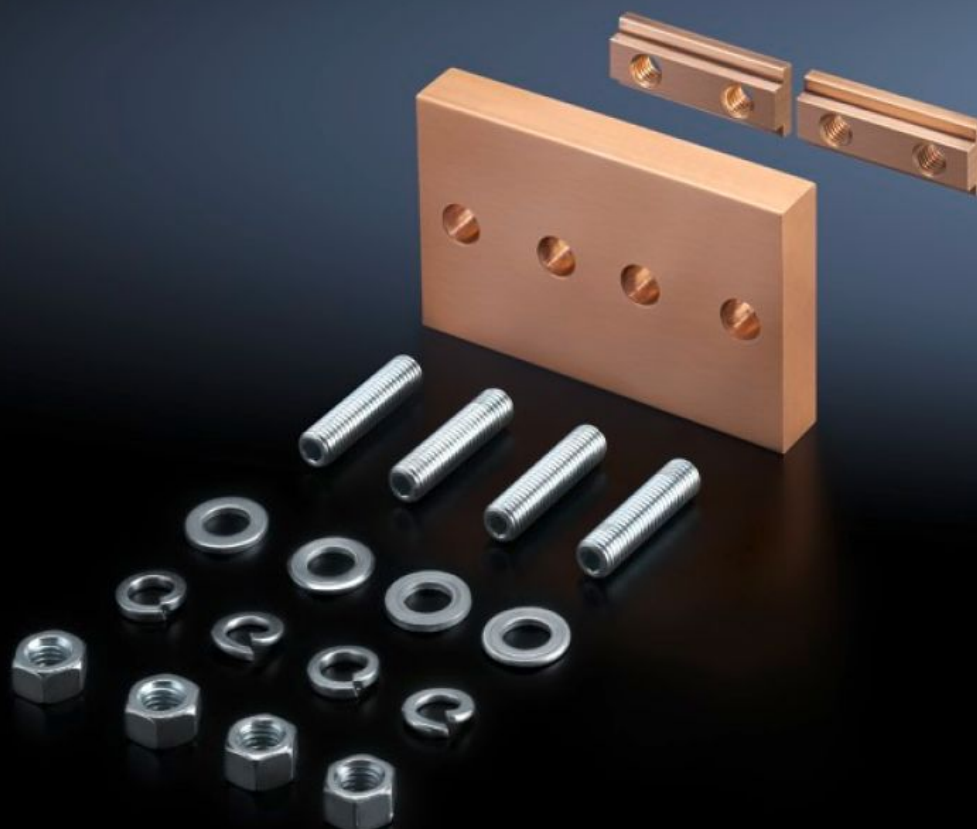


Rittal – The System.

Faster – better – everywhere.



SV 9650.191

Longitudinal connector E-Cu

State: 4.4.2026 (Source: rittal.com/si-sl)

ENCLOSURES

POWER DISTRIBUTION

CLIMATE CONTROL

IT INFRASTRUCTURE

SOFTWARE & SERVICES

FRIEDHELM LOH GROUP



SV 9650.191 - Longitudinal connector E-Cu

For simple baying connection of Maxi-PLS busbars.

Features

Model No.	SV 9650.191
Applications	For simple baying connection of Maxi-PLS busbars
Material	E-Cu
Supply includes	Longitudinal connectors Sliding blocks Bolts Assembly parts
To fit busbars	Maxi-PLS 60
Packs of	1 pc(s).
Net weight	2,21 kg
Gross weight	2,221 kg
Copper weight (kg per piece)	1,87
Customs tariff number	74198090
ETIM 9	EC002525
ECLASS 8.0	27400613
Product description	SV Longitudinal connector E-Cu, for Maxi-PLS busbar, Maxi-PLS 3200

Approvals

Approvals	UL + C-UL (listed)
Explanations	Declaration of conformity Declaration of conformity UK