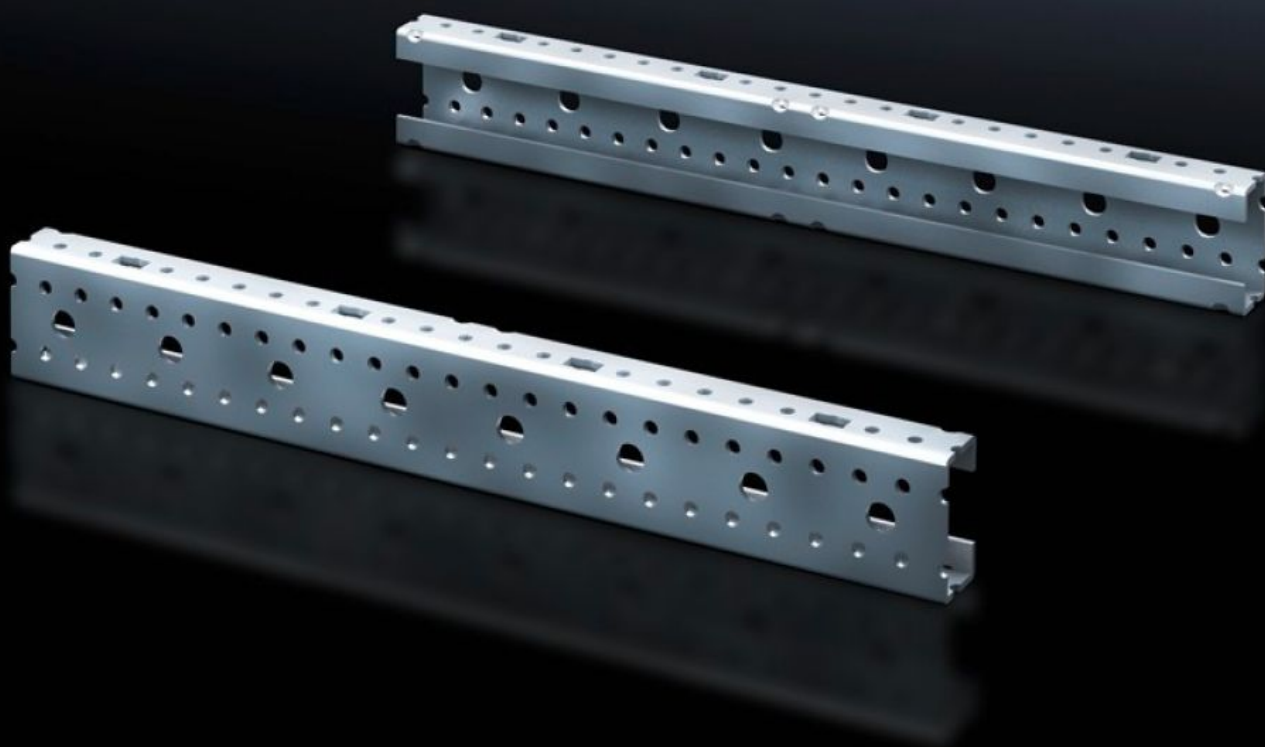


Rittal – The System.

Faster – better – everywhere.



SV 9666.702 Mounting angles ISV

State: 28.8.2025 (Source: [rittal.com/si-sl](https://www.rittal.com/si-sl))

ENCLOSURES

POWER DISTRIBUTION

CLIMATE CONTROL

IT INFRASTRUCTURE

SOFTWARE & SERVICES

FRIEDHELM LOH GROUP



SV 9666.702 - Mounting angles ISV for VX

For vertical sub-division of the support frame in the VX/TS/SE enclosure.

Features

| | |
|-------------------------------|--|
| Model No. | SV 9666.702 |
| Product description | For vertical sub-division of the support frame in the enclosure. |
| Material | Sheet steel |
| Surface finish | Zinc-plated |
| Dimensions | Height: 300 mm |
| Size | Height units (U) @ 150 mm: 2 |
| Packs of | 2 pc(s). |
| Net weight | 0.7 |
| Gross weight | 0.703 |
| PCF per pack (cradle-to-gate) | 2.7 kg CO2 eq (Cat B) |
| Note on PCF category | Category B: PCF value (cradle-to-gate) based on the product weight, approximately calculated and self-declared |
| Customs tariff number | 39269097 |
| EAN | 4028177676589 |
| ETIM 9 | EC002270 |
| ECLASS 8.0 | 27400613 |