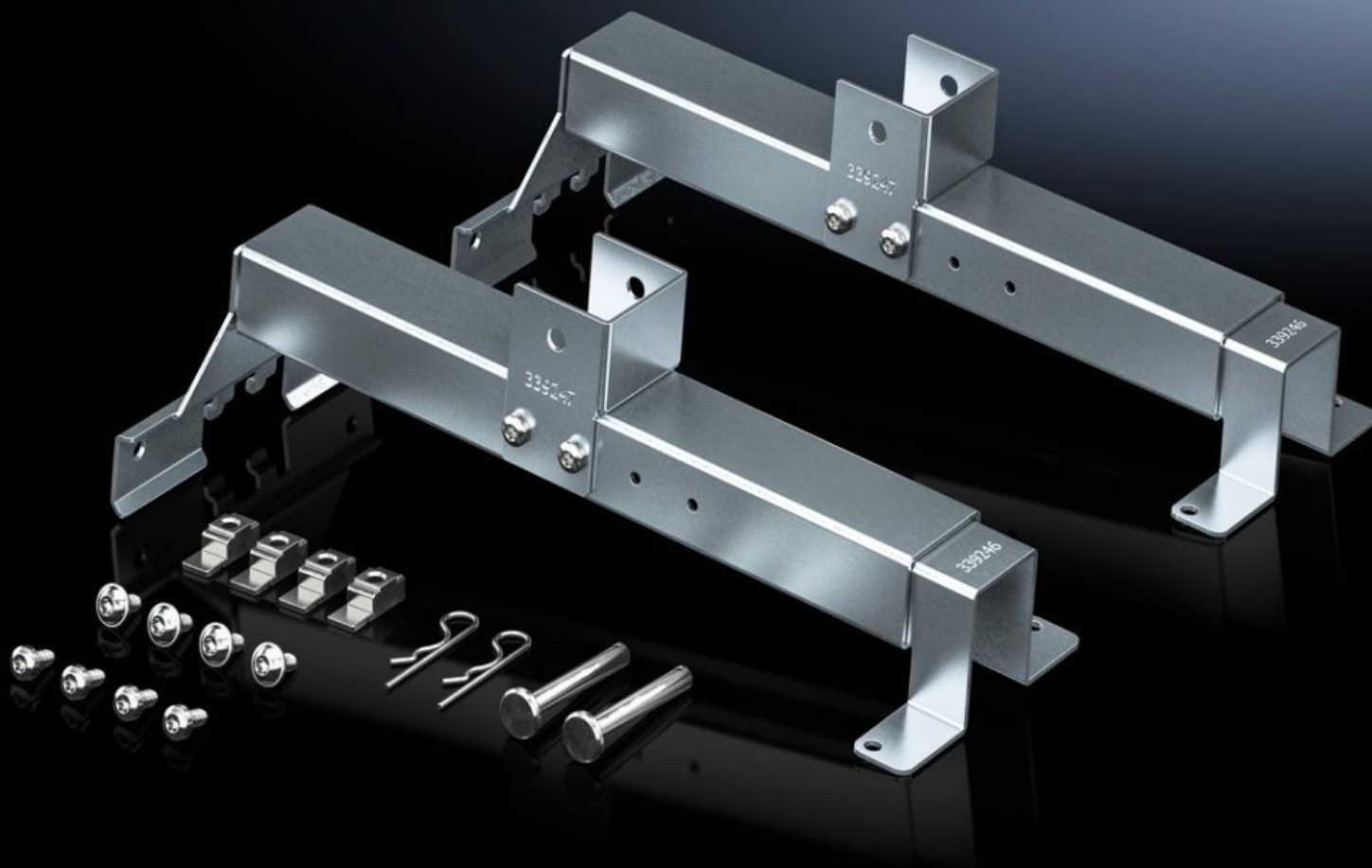


# Rittal – The System.

Faster – better – everywhere.



## SV 9666.732 Depth stay

State: 1.9.2025 (Source: [rittal.com/si-sl](https://www.rittal.com/si-sl))

ENCLOSURES

POWER DISTRIBUTION

CLIMATE CONTROL

IT INFRASTRUCTURE

SOFTWARE & SERVICES

FRIEDHELM LOH GROUP



# SV 9666.732 - Depth stay for installation kit ISV

For attaching the ISV installation kit in the enclosure.

## Features

|                               |  |
|-------------------------------|--|
| Model No.                     | SV 9666.732  |
| Product description           | For attaching the installation kit in the enclosure.   |
| Material                      | Sheet steel  |
| Surface finish                | Zinc-plated  |
| Supply includes               | Assembly parts   |
| To fit Model No.              | 9666.902<br>9666.912<br>9666.922<br>9666.932   |
| To fit                        | Enclosure type: VX<br>Depth: = 400 mm<br>= 500 mm<br>= 600 mm  |
| Packs of                      | 2 pc(s).   |
| Net weight                    | 3.04   |
| Gross weight                  | 3.04   |
| PCF per pack (cradle-to-gate) | 12.3 kg CO2 eq (Cat B)   |
| Note on PCF category          | Category B: PCF value (cradle-to-gate) based on the product weight, approximately calculated and self-declared |
| Customs tariff number         | 73269098   |
| EAN                           | 4028177923256  |
| ETIM 9                        | EC002270   |
| ECLASS 8.0                    | 27400613   |