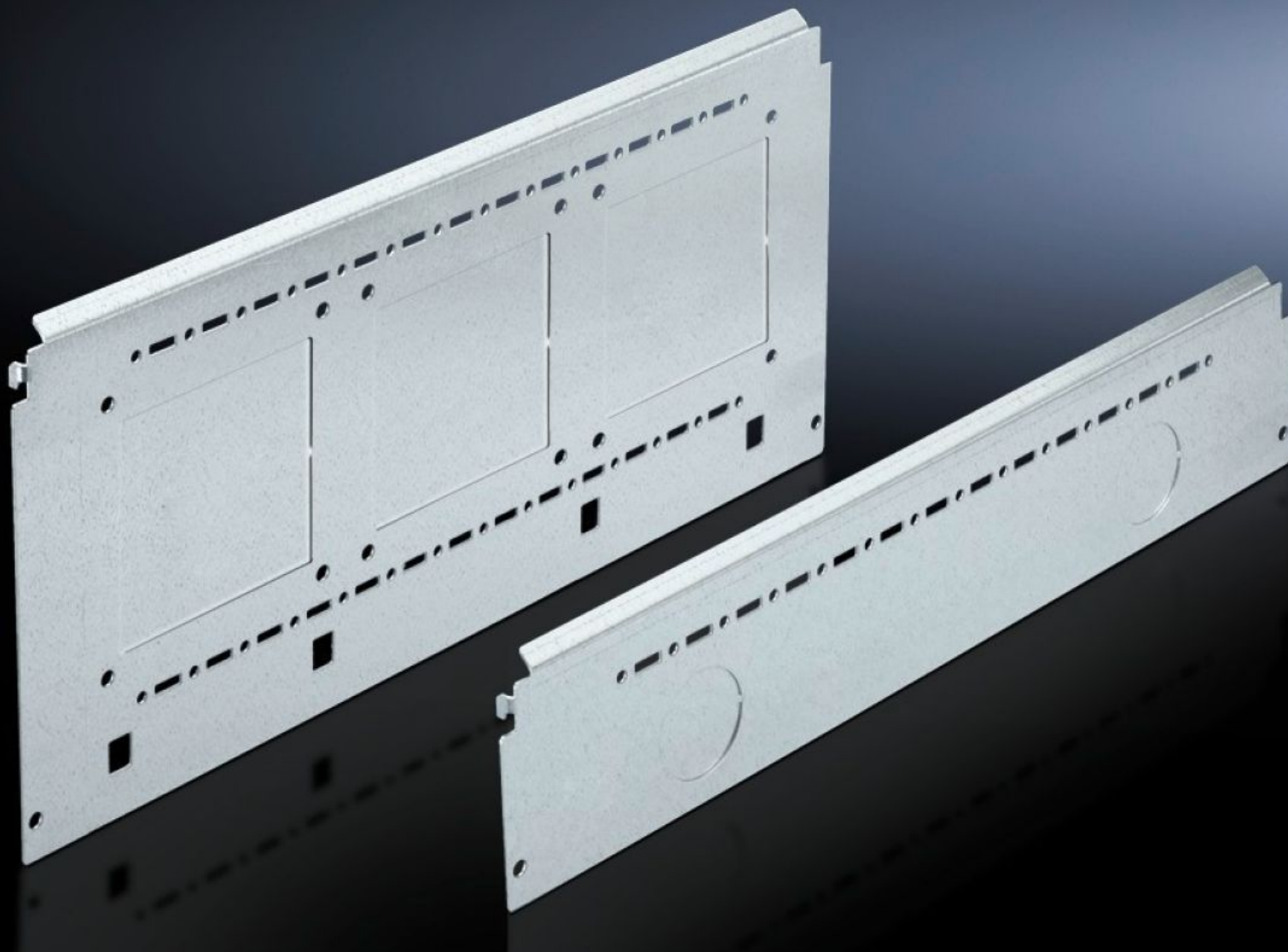


# Rittal – The System.

Faster – better – everywhere.



## SV 9673.086

## Compartment side panel module

State: 28.8.2025 (Source: [rittal.com/si-sl](https://www.rittal.com/si-sl))

ENCLOSURES

POWER DISTRIBUTION

CLIMATE CONTROL

IT INFRASTRUCTURE

SOFTWARE & SERVICES

FRIEDHELM LOH GROUP



# SV 9673.086 - Compartment side panel module for internal compartmentalisation

Side divider panel for compartments, for locating into the TS pitch pattern.



## Features

Model No.	SV 9673.086
Product description	Side divider panel for compartments, for locating into the TS pitch pattern. Prepared for the location of mounting brackets for horizontal compartment dividers or mounting plates. Two TS system punchings allow the use of additional TS accessories. The side panel modules for reduced compartment depth and an auxiliary construction using TS punched rails 17 x 17 mm can be used to provide a separate enclosure space in the side panel area, e.g. for the provision of a busbar system.
Material	Sheet steel, 1.5 mm
Surface finish	Zinc-plated
Supply includes	Assembly parts
For compartment depth	800 mm
Dimensions	Height: 600 mm
Packs of	2 pc(s).
Net weight	9.834
Gross weight	10.352
Customs tariff number	73269098
EAN	4028177575868

# Features

ETIM 9	EC002525
ECLASS 8.0	27400613