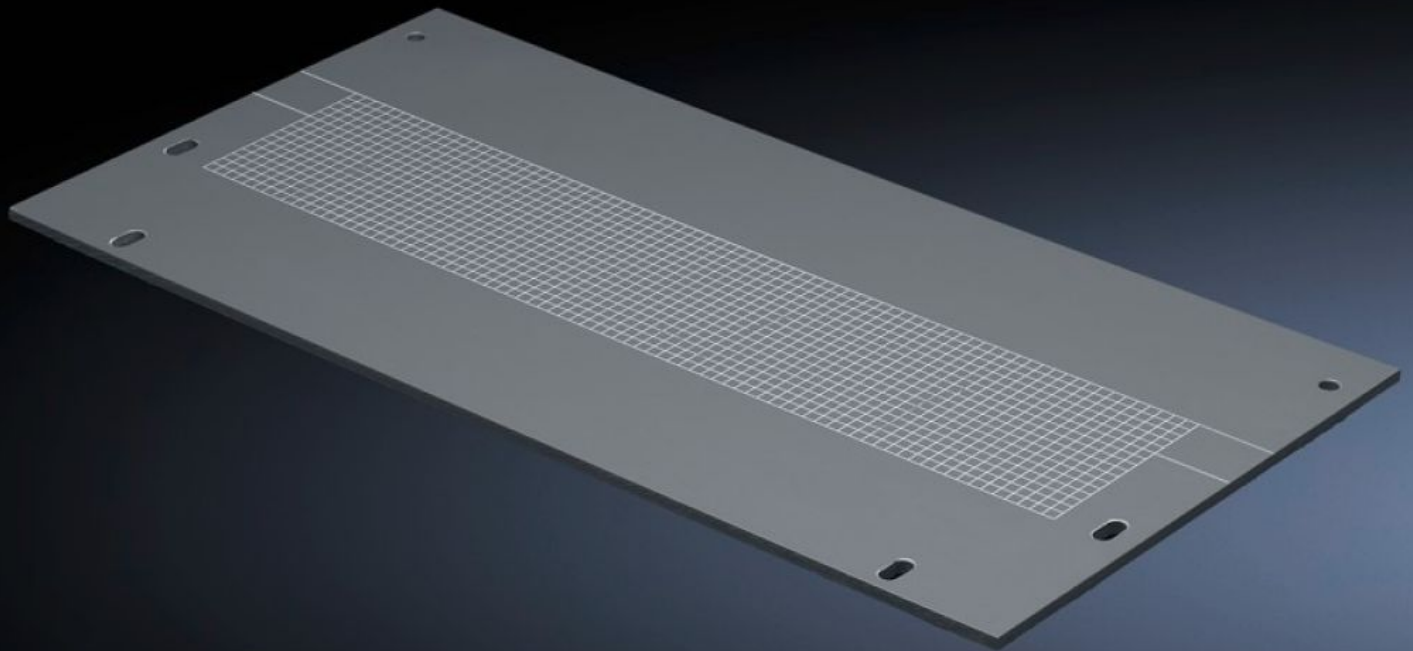


# Rittal – The System.

Faster – better – everywhere.



## SV 9673.504 Gland plate

State: 6.4.2026 (Source: [rittal.com/si-sl](http://rittal.com/si-sl))

ENCLOSURES

POWER DISTRIBUTION

CLIMATE CONTROL

IT INFRASTRUCTURE

SOFTWARE & SERVICES

FRIEDHELM LOH GROUP



# SV 9673.504 - Gland plate for compartment divider with duct

To shroud the opening for vertical busbar systems.



## Features

Model No.	SV 9673.504
Product description	To shroud the opening for vertical busbar systems.
Material	ABS PMMA
Dimensions	Width: 250 mm Height: 223.5 mm
To fit	Width: = 400 mm
Packs of	4 pc(s).
Net weight	0,996 kg
Customs tariff number	39269097
ETIM 9	EC002525
ECLASS 8.0	27400613
Product description	SV Gland plate, WH: 250x223,5 mm, for compartment divider with duct, for TS (W: 400 mm)