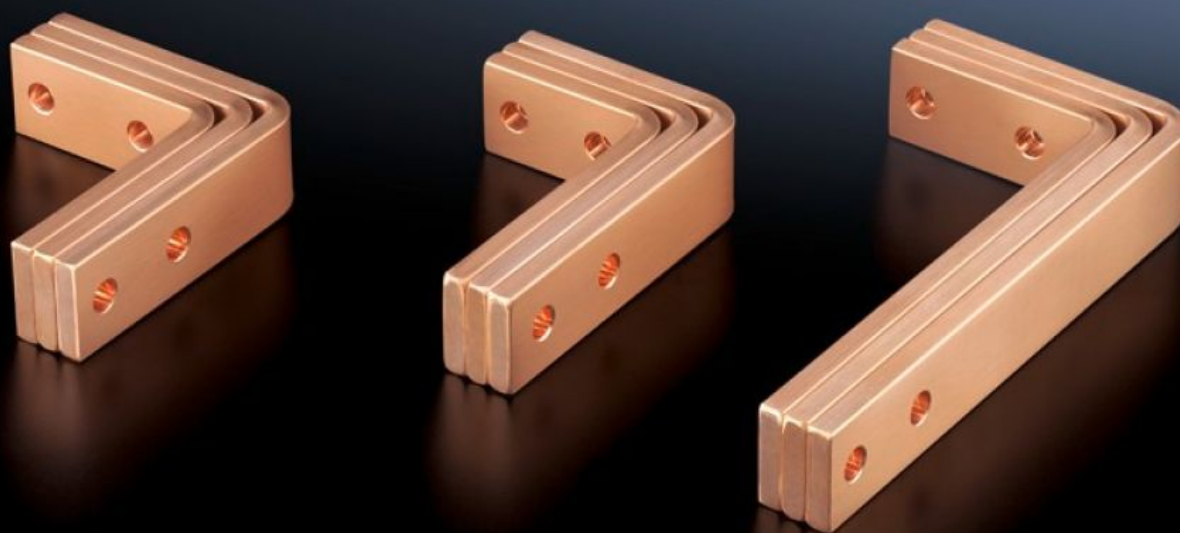


Rittal – The System.

Faster – better – everywhere.



SV 9675.887

Angular connectors

State: 22.6.2025 (Source: rittal.com/si-sl)

ENCLOSURES

POWER DISTRIBUTION

CLIMATE CONTROL

IT INFRASTRUCTURE

SOFTWARE & SERVICES

FRIEDHELM LOH GROUP



SV 9675.887 - Angular connectors

For connecting horizontal Flat-PLS busbar systems in the rear section to vertical Flat-PLS busbar systems.

Features

Model No.	SV 9675.887
Applications	For connecting horizontal Flat-PLS busbar systems in the rear section to vertical Flat-PLS busbar systems.
For number of bars per conductor	3 4
Suitable for busbar application	N
To fit busbar system	Flat-PLS 60
To fit	Depth: = 600 mm
To fit busbars	Width: 40, 50, 60 Height: 10 mm
Packs of	1 set(s)
Copper weight (kg per piece)	10.44
Customs tariff number	74198090
EAN	4028177626409
ECLASS 8.0	27400613