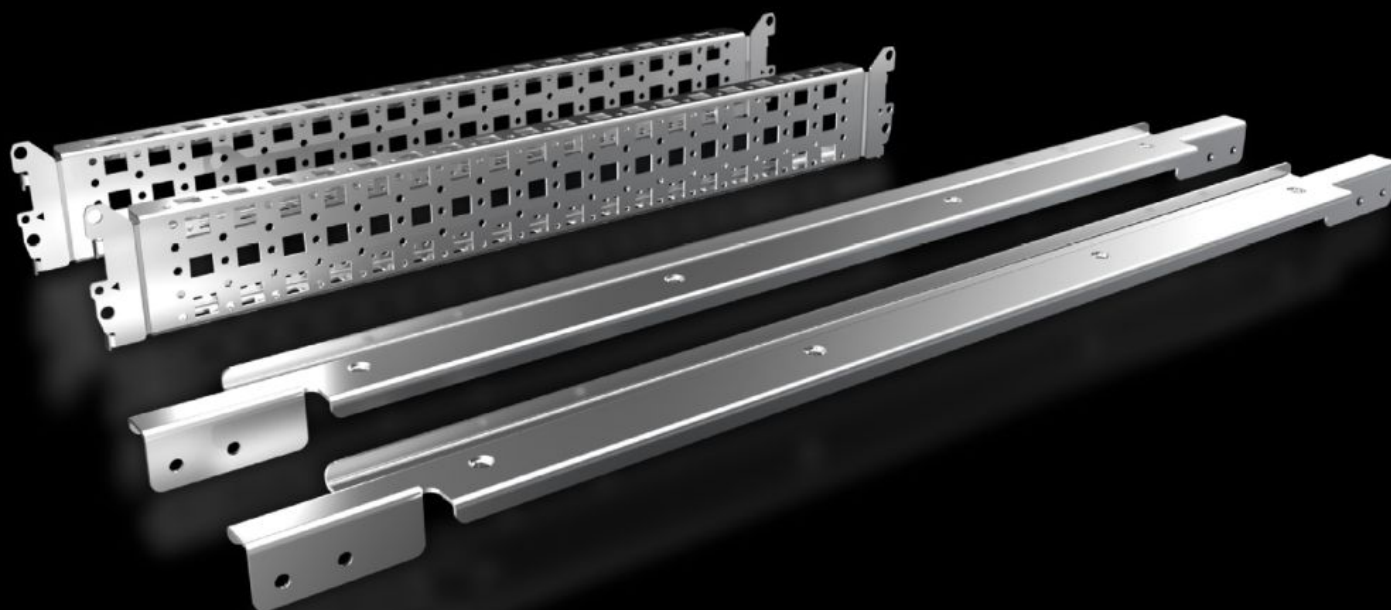


# Rittal – The System.

Faster – better – everywhere.



## SV 9677.511 System attachment

State: 9.1.2026 (Source: [rittal.com/si-sl](https://www.rittal.com/si-sl))

ENCLOSURES

POWER DISTRIBUTION

CLIMATE CONTROL

IT INFRASTRUCTURE

SOFTWARE & SERVICES

FRIEDHELM LOH GROUP



# SV 9677.511 - System attachment for VX, TS

For attaching busbar systems with 185 mm centre-to-centre spacing in enclosures.

## Features

Model No.	SV 9677.511
Product description	For attaching busbar systems with 185 mm centre-to-centre spacing inside the enclosure.
Material	Sheet steel
Surface finish	Zinc-plated
Supply includes	2 system attachments (left/right) 2 punched sections without mounting flanges Assembly parts
Assembly instruction	For variable depth adjustment of the busbar system in the enclosure, the punched section with mounting flange 23 x 64 mm for VX (for the inner mounting level) is additionally required. Select according to the enclosure depth.
Packs of	1 pc(s).
Net weight	3.24
Gross weight	3.44
PCF per pack (cradle-to-gate)	13.1 kg CO2 eq (Cat B)
Note on PCF category	Category B: PCF value (cradle-to-gate) based on the product weight, approximately calculated and self-declared
Customs tariff number	83024900
EAN	4028177923324
ETIM 9	EC002270
ECLASS 8.0	27400613