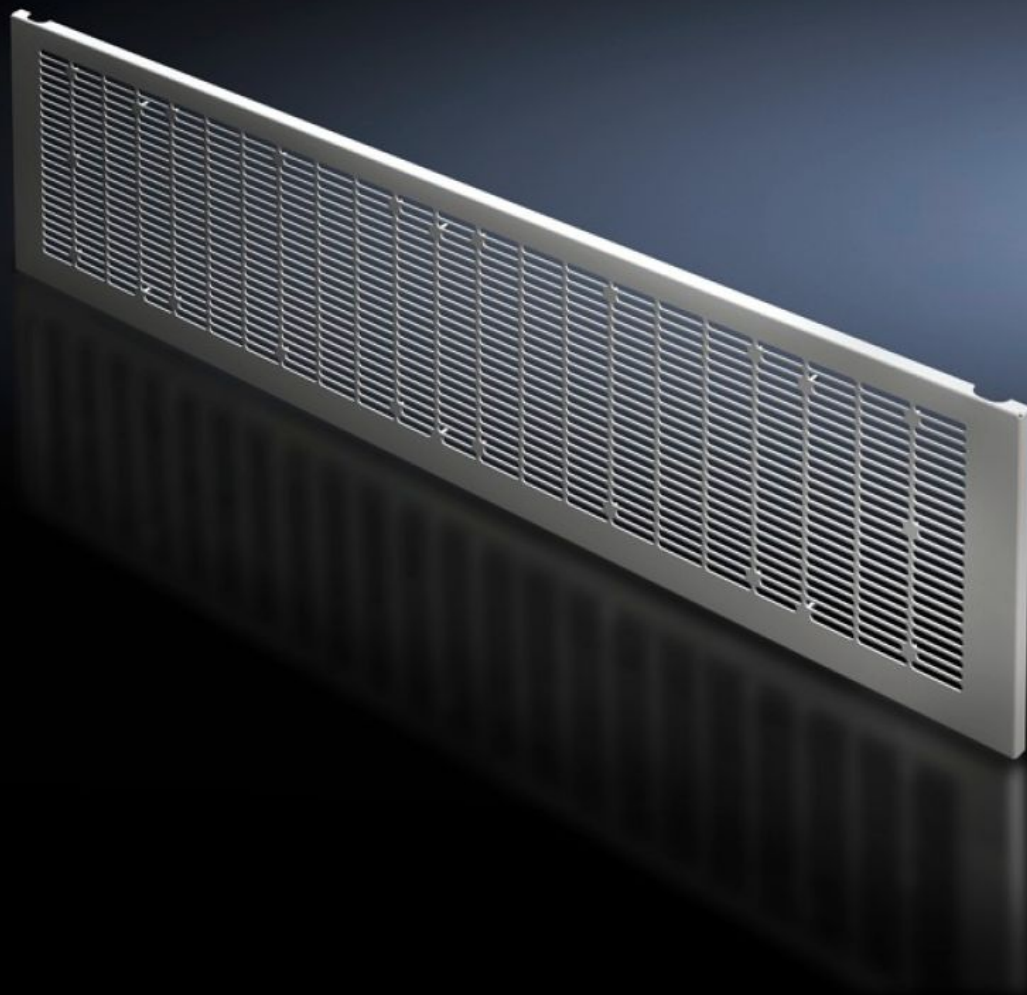


# Rittal – The System.

Faster – better – everywhere.



## VX 9682.358

## Front trim panel, bottom, vented

State: 16.7.2025 (Source: [rittal.com/si-sl](https://www.rittal.com/si-sl))

ENCLOSURES

POWER DISTRIBUTION

CLIMATE CONTROL

IT INFRASTRUCTURE

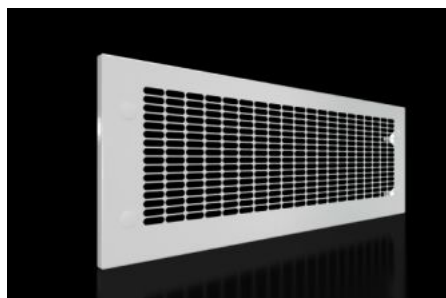
SOFTWARE & SERVICES

FRIEDHELM LOH GROUP



# VX 9682.358 - Front trim panel, bottom, vented for VX

To finish off at the bottom when using partial doors.



## Features

|                               |   |
|-------------------------------|---|
| Model No.                     | VX 9682.358   |
| Design                        | with vents  |
| Product description           | To finish off the modular front design at the bottom when using partial doors. The front trim panels may be removed from the outside by unscrewing. |
| Material                      | Sheet steel, 1.5 mm   |
| Surface finish                | Textured paint  |
| Colour                        | RAL 7035  |
| Supply includes               | Front trim panel<br>Cross member<br>Assembly parts  |
| Note                          | When using front trim panels IP 2X, select a roof plate with protection category IP 2X for the top ventilation.                                     |
| Dimensions                    | Height: 300 mm  |
| To fit                        | Width: = 800 mm   |
| Packs of                      | 1 pc(s).  |
| Net weight                    | 3.26  |
| Gross weight                  | 3.66  |
| PCF per pack (cradle-to-gate) | 13.9 kg CO2 eq (Cat B)  |

# Features

|                       |  |
|-----------------------|--|
| Note on PCF category  | Category B: PCF value (cradle-to-gate) based on the product weight, approximately calculated and self-declared |
| Customs tariff number | 83024200   |
| EAN                   | 4028177929807  |
| ETIM 9                | EC000456   |
| ECLASS 8.0            | 27142423   |

# Approvals

|              |   |
|--------------|---|
| Approvals    | UL + C-UL (listed)<br>UL + C-UL - FTTA                    |
| Explanations | Declaration of conformity<br>Declaration of conformity UK |