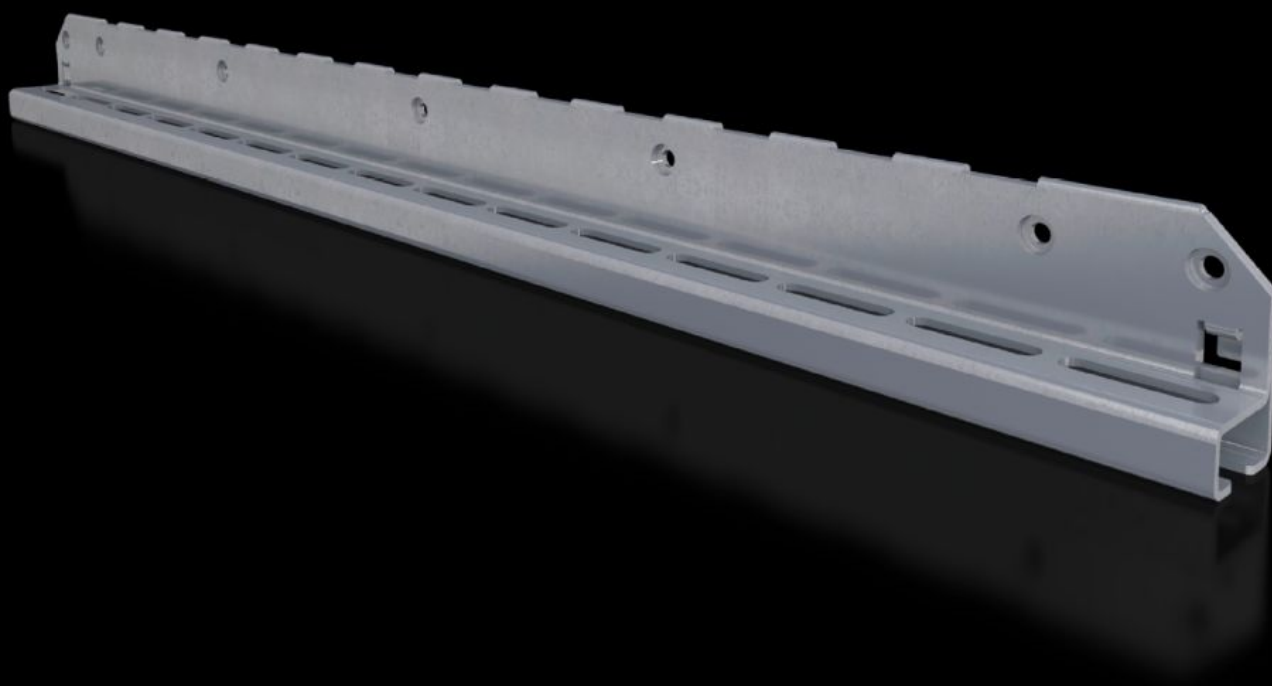


Rittal – The System.

Faster – better – everywhere.



SV 9683.328 Mounting bracket

State: 19.8.2025 (Source: [rittal.com/si-sl](https://www.rittal.com/si-sl))

ENCLOSURES

POWER DISTRIBUTION

CLIMATE CONTROL

IT INFRASTRUCTURE

SOFTWARE & SERVICES

FRIEDHELM LOH GROUP



SV 9683.328 - Mounting bracket for air circuit-breaker support rail

For attaching the air circuit-breaker support rail.

Features

| | |
|-------------------------------|----------------------------------------------------------------------------------------------------------------|
| Model No. | SV 9683.328 |
| Product description | For attaching the air circuit-breaker support rail to the enclosure section or compartment side panel. |
| Material | Sheet steel, 2.5 mm |
| Surface finish | Zinc-plated |
| Supply includes | Assembly parts |
| To fit | Depth: = 800 mm |
| Packs of | 2 pc(s). |
| Net weight | 4.7 |
| Gross weight | 4.98 |
| PCF per pack (cradle-to-gate) | 19 kg CO2 eq (Cat B) |
| Note on PCF category | Category B: PCF value (cradle-to-gate) based on the product weight, approximately calculated and self-declared |
| Customs tariff number | 73182900 |
| EAN | 4028177937505 |
| ETIM 9 | EC002270 |
| ECLASS 8.0 | 27400613 |

Approvals

| | |
|--------------|------------------------------|
| Explanations | Declaration of conformity UK |
|--------------|------------------------------|