

Rittal – The System.

Faster – better – everywhere.



DK 2094.400

Rozperné matice so skrutkami, 19"

State: 22.5.2026 (Source: rittal.com/sk-sk)

ENCLOSURES

POWER DISTRIBUTION

CLIMATE CONTROL

IT INFRASTRUCTURE

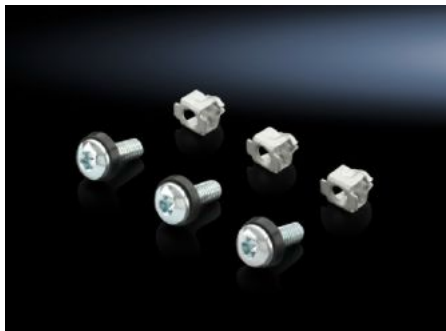
SOFTWARE & SERVICES

FRIEDHELM LOH GROUP



DK 2094.400 - Rozperné matice so skrutkami, 19"

Consists of an expanding nut which is inserted into the square attachment hole at the front and then secured with the assembly screw.



Features

Obj. č.	DK 2094.400
Prevedenie	Veľkosť upevňovacieho otvoru 9,5 x 9,5 mm
Materiál	Oceľový plech
Povrch	Pozinkovaný
Rozsah dodávky	Skrutky s plochou hlavou Rozperná matica Podložky z umelej hmoty
Rozmery	Závit: M6 Dĺžka závit: 16 mm
Balenie	50 pc(s).
Netto hmotnosť	0,3 kg
Brutto hmotnosť	0,38 kg
PCF per pack (cradle-to-gate)	1,3 kg CO2 eq (Cat B)

Features

Note on PCF category	Category B: PCF value (cradle-to-gate) based on the product weight, approximately calculated and self-declared
Číslo colnej sadzby	73181900
ETIM 9	EC002358
ETIM 8	EC002358
ECLASS 8.0	23110815
Popis výrobku	DK nasadzovacia matica, 19", M6, D: 16 mm,