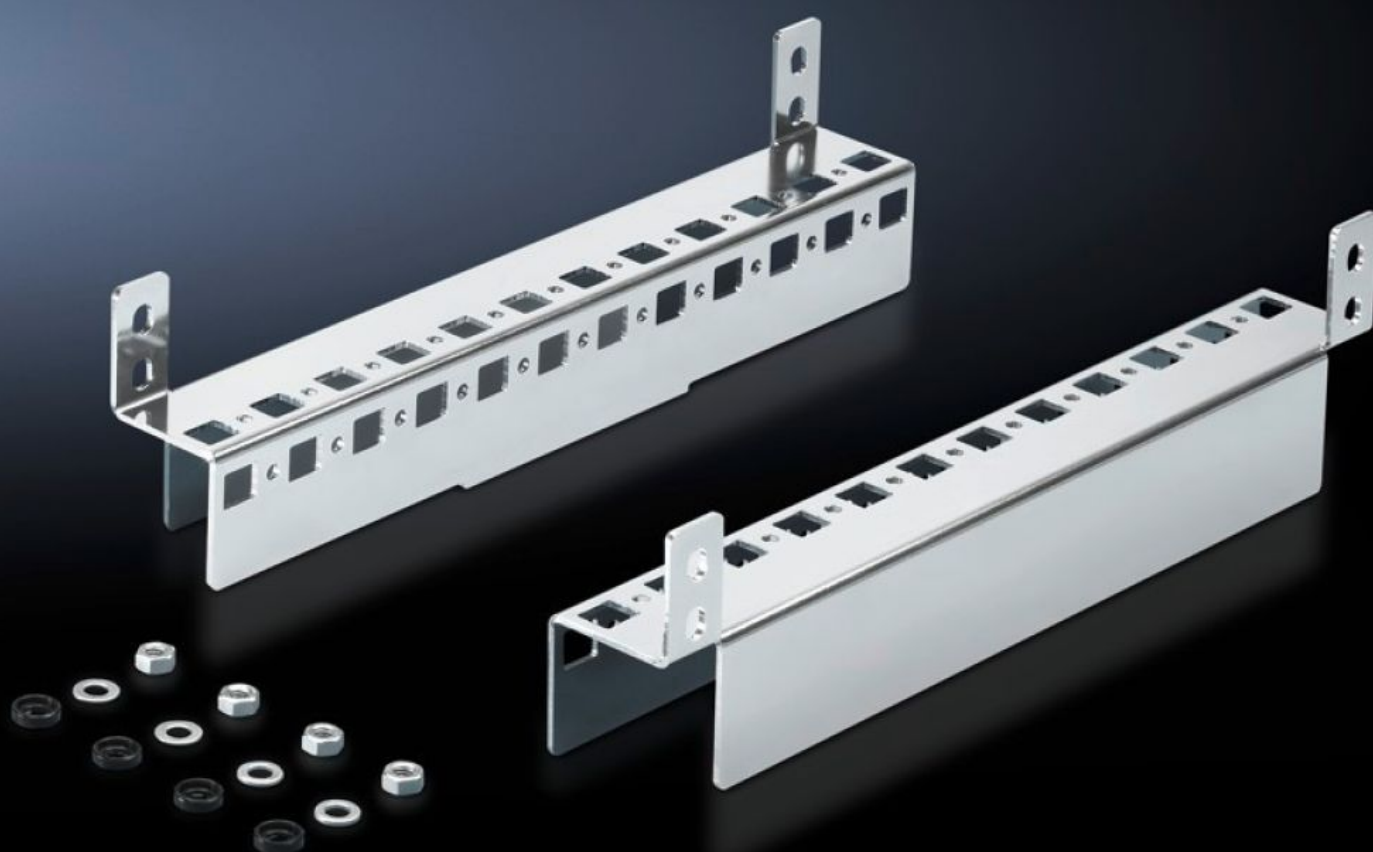
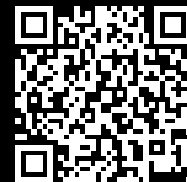


Rittal – The System.

Faster – better – everywhere.



CM 5001.370

Podlahová montážna lišta

State: 23.5.2026 (Source: rittal.com/sk-sk)

ENCLOSURES

POWER DISTRIBUTION

CLIMATE CONTROL

IT INFRASTRUCTURE

SOFTWARE & SERVICES

FRIEDHELM LOH GROUP



CM 5001.370 - Podlahová montážna lišta pre TP

For mounting in the enclosure depth, on the existing threaded bolts, no machining required.
System punchings on 2 sides. Creates additional installation options.



Features

Obj. č.	CM 5001.370
Materiál	Oceľový plech
Povrch	Pozinkovaný
Rozsah dodávky	Vrátane upevňovacieho materiálu
Vhodné pre	Typ skrine: TP Hĺbka: = 400 mm
Balenie	2 pc(s).
Netto hmotnosť	1 kg
Brutto hmotnosť	1,075 kg
PCF per pack (cradle-to-gate)	4,1 kg CO2 eq (Cat B)
Note on PCF category	Category B: PCF value (cradle-to-gate) based on the product weight, approximately calculated and self-declared
Číslo colnej sadzby	73269098
ETIM 9	EC002625
ETIM 8	EC002625
ECLASS 8.0	27189234
Popis výrobku	CM podlahová montážna lišta, pre TP, pre H: 400 mm