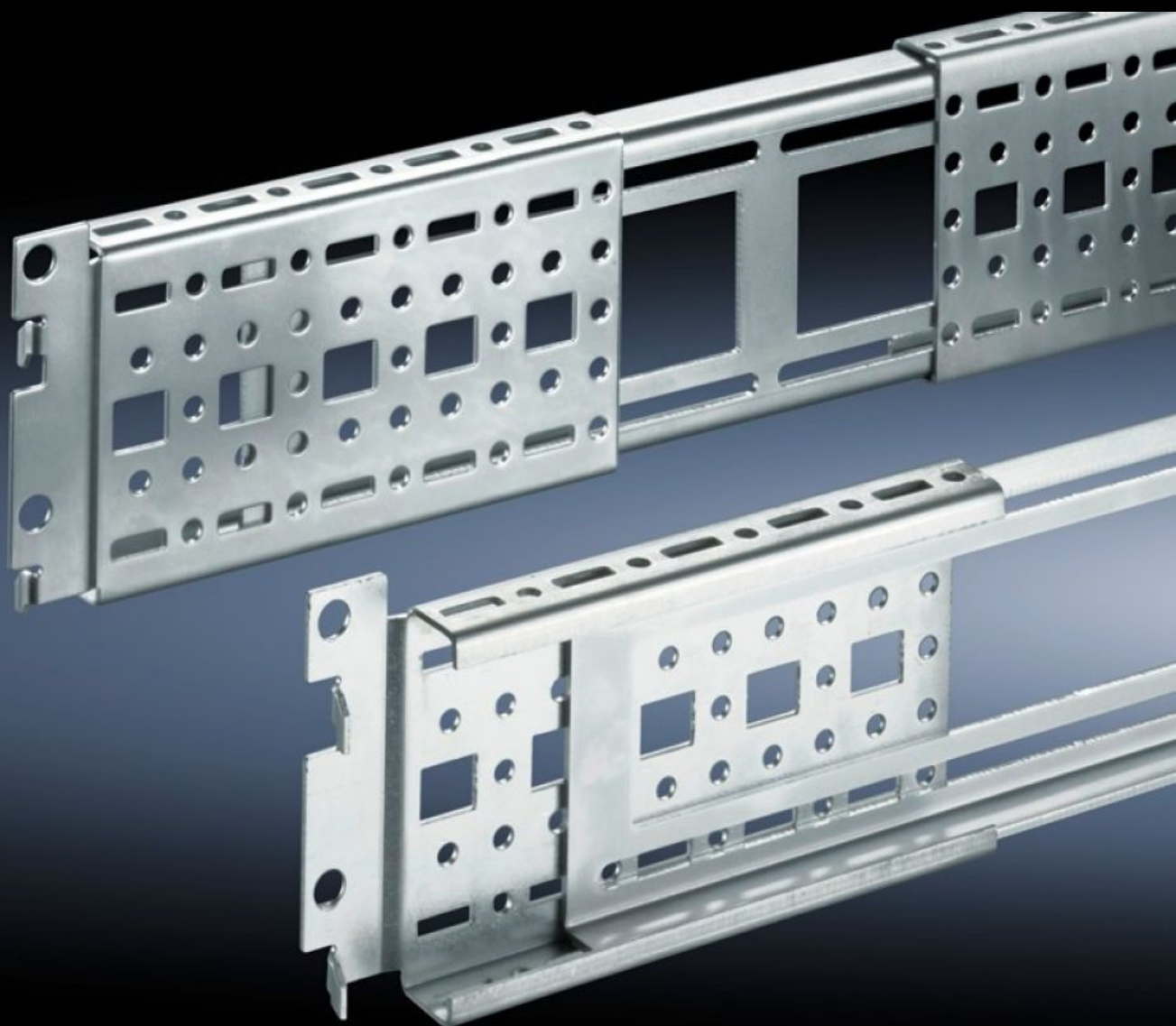


**Rittal – The System.**

Faster – better – everywhere.



**DK 7000.678**

**Systemové chassis 17 x 73 mm, s  
plynulo premennou hĺbkou pre  
montážny rám**

State: 24.5.2026 (Source: [rittal.com/sk-sk](http://rittal.com/sk-sk))

ENCLOSURES

POWER DISTRIBUTION

CLIMATE CONTROL

IT INFRASTRUCTURE

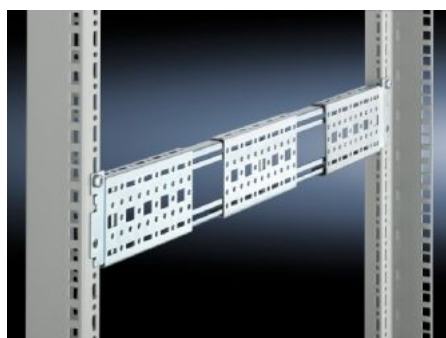
SOFTWARE & SERVICES

FRIEDHELM LOH GROUP



# DK 7000.678 - Systémové chassis 17 x 73 mm, s plynulo premennou hĺbkou pre montážny rám pre TS, TE, TX CableNet

For flexible interior installation, and/or to accommodate additional built-in components. The punched sections with mounting flanges may be located in the enclosure depth between two mounting frames.



## Features

Obj. č.	DK 7000.678
Materiál	Oceľový plech
Povrch	Pozinkovaný
Rozsah dodávky	Vrátane upevňovacích skrutiek
Vhodné pre	pre TS, TE, TX CableNet
Dĺžka	530: 700 mm
Balenie	2 pc(s).
Netto hmotnosť	1,64 kg
Brutto hmotnosť	1,84 kg
Číslo colnej sadzby	73269098
ETIM 9	EC002625
ECLASS 8.0	27189234
Popis výrobku	DK punched section with mounting flange, for TS, TX CableNet, TE, 17 x 73 mm, L: 530 - 700 mm