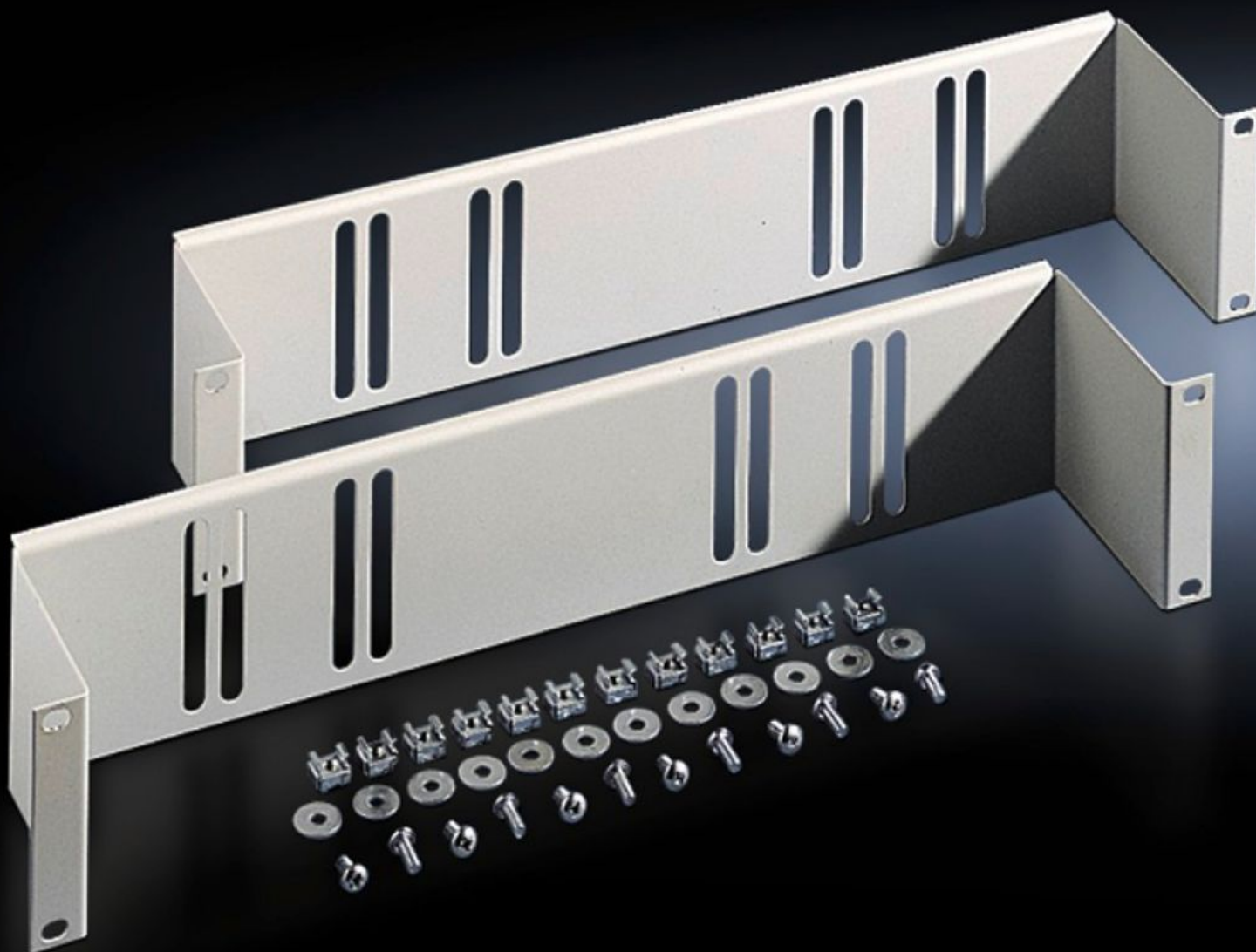


Rittal – The System.

Faster – better – everywhere.



DK 7050.035

Montážny systém, 2 U

State: 23.5.2026 (Source: rittal.com/sk-sk)

ENCLOSURES

POWER DISTRIBUTION

CLIMATE CONTROL

IT INFRASTRUCTURE

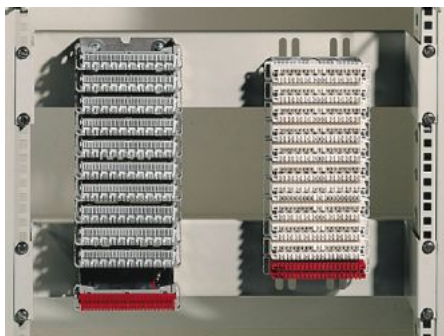
SOFTWARE & SERVICES

FRIEDHELM LOH GROUP



DK 7050.035 - Montážny systém, 2 U pre montážnu sadu LSA

To accommodate LSA mounting troughs/universal mounting brackets on the 482.6 mm (19") mounting angle.



Features

| | |
|-------------------------------|--|
| Obj. č. | DK 7050.035 |
| Materiál | Oceľový plech |
| Povrch | S nástrekom |
| Farba | RAL 7035 |
| Rozsah dodávky | Vrátane upevňovacieho materiálu |
| Rozmery | Hĺbka: 98,5 mm |
| Balenie | 2 pc(s). |
| Netto hmotnosť | 1,204 kg |
| Brutto hmotnosť | 1,38 kg |
| PCF per pack (cradle-to-gate) | 5,2 kg CO2 eq (Cat B) |
| Note on PCF category | Category B: PCF value (cradle-to-gate) based on the product weight, approximately calculated and self-declared |
| Číslo colnej sadzby | 83024900 |
| ETIM 9 | EC002620 |
| ECLASS 8.0 | 27189261 |

Features

Popis výrobku

DK montážny systém pre montážnu sadu LSA, na montáž nosných systémov LSA, v rámci montážnej roviny 482,6 mm (19?), 2 U, H: 98,5 mm