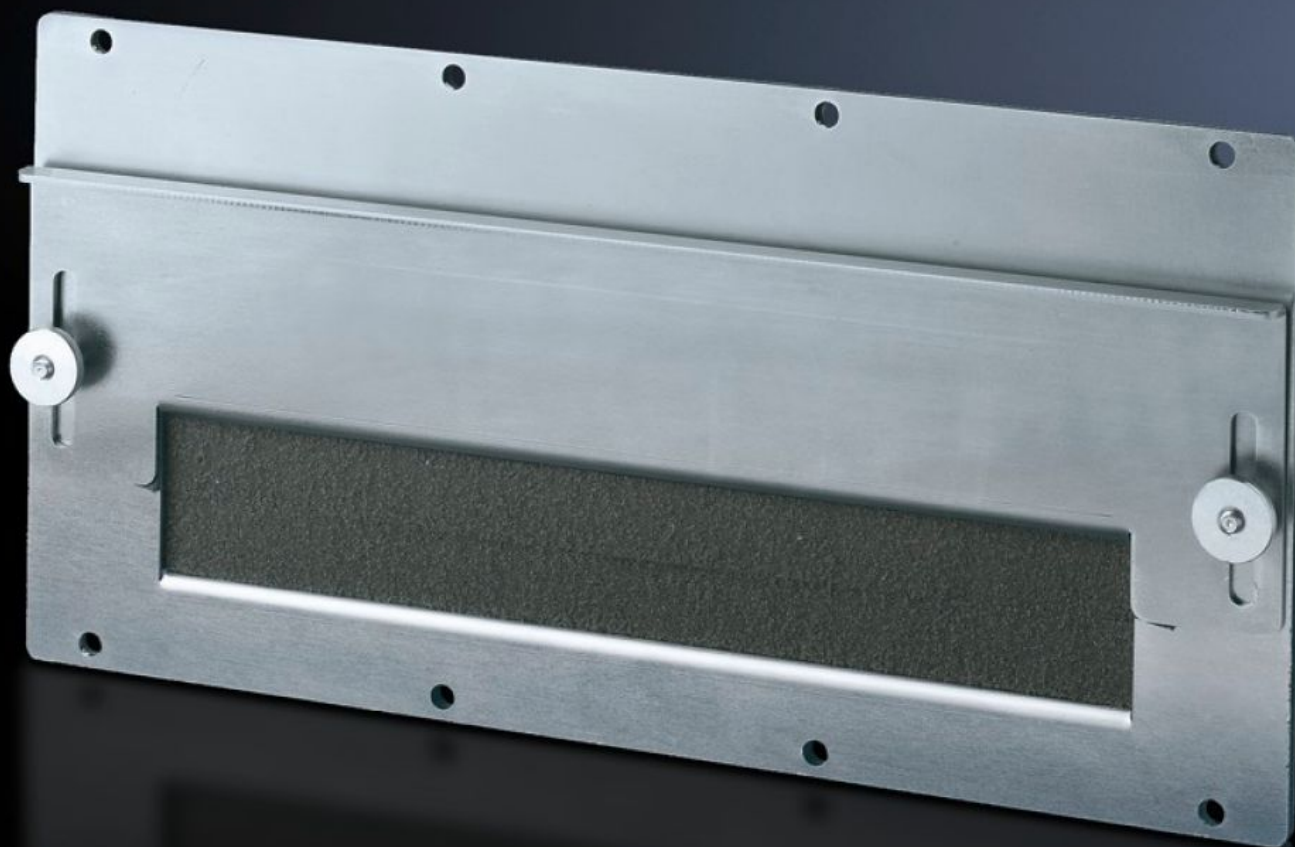
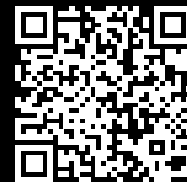


# Rittal – The System.

Faster – better – everywhere.



## SZ 8609.170 Modulové dosky

State: 23.5.2026 (Source: [rittal.com/sk-sk](http://rittal.com/sk-sk))

ENCLOSURES

POWER DISTRIBUTION

CLIMATE CONTROL

IT INFRASTRUCTURE

SOFTWARE & SERVICES

FRIEDHELM LOH GROUP



# SZ 8609.170 - Modulové dosky na pretiahnutie káblov

For pre-assembled cable entry. Sealed, secure routing is achieved via adjustable angle brackets with inserted foam cable clamp strip. Fixed bracket, punched, for cable clamping.

## Features

Obj. č.	SZ 8609.170
Prevedenie	na pretiahnutie káblov
Materiál	Oceľový plech, 2 mm
Povrch	Pozinkovaný
Rozsah dodávky	Vrátane tesnenia a upevňovacieho materiálu
Balenie	1 pc(s).
Netto hmotnosť	0,9 kg
Brutto hmotnosť	1,141 kg
PCF per pack (cradle-to-gate)	5,7 kg CO2 eq (Cat B)
Note on PCF category	Category B: PCF value (cradle-to-gate) based on the product weight, approximately calculated and self-declared
Číslo colnej sadzby	83024200
ETIM 9	EC000211
ECLASS 8.0	27142421
Popis výrobku	TS modulová doska, pre káblový vstup