

Rittal – The System.

Faster – better – everywhere.



RX 9365.003

RiLineX baying connector

State: 25.5.2026 (Source: rittal.com/sk-sk)

ENCLOSURES

POWER DISTRIBUTION

CLIMATE CONTROL

IT INFRASTRUCTURE

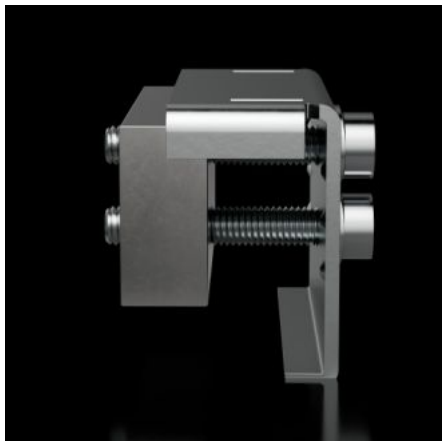
SOFTWARE & SERVICES

FRIEDHELM LOH GROUP



RX 9365.003 - RiLineX baying connector pre prípojnice

Short busbar connector for the baying set, for connecting modular RiLineX boards. The 3-pole baying set (9360103) is additionally required.



Features

Obj. č.	RX 9365.003
Materiál	Horná časť: oceľový plech, pozinkovaný Kontaktná doštička: E-Cu, pocínovaná
Menovitý prúd (max.)	800 A
Rozmery	Šírka: 45 mm
Vhodné pre prípojnice	15 x 5/10 20 x 5/10 30 x 5/10
Balenie	3 pc(s).
Netto hmotnosť	0,564 kg
Brutto hmotnosť	0,572 kg
Podiel medi (kg / ks)	0,339
PCF per pack (cradle-to-gate)	3,15
Číslo colnej sadzby	73269098
ETIM 9	EC002622

Features

Popis výrobku

Short busbar connector for the baying set, for connecting modular RiLineX boards. The 3-pole baying set (9360103) is additionally required. For E-Cu 15x5-30x10 mm, L: 45 mm

Approvals

Approvals

UL + C-UL (listed)

Explanations

Declaration of conformity
PCF-declaration