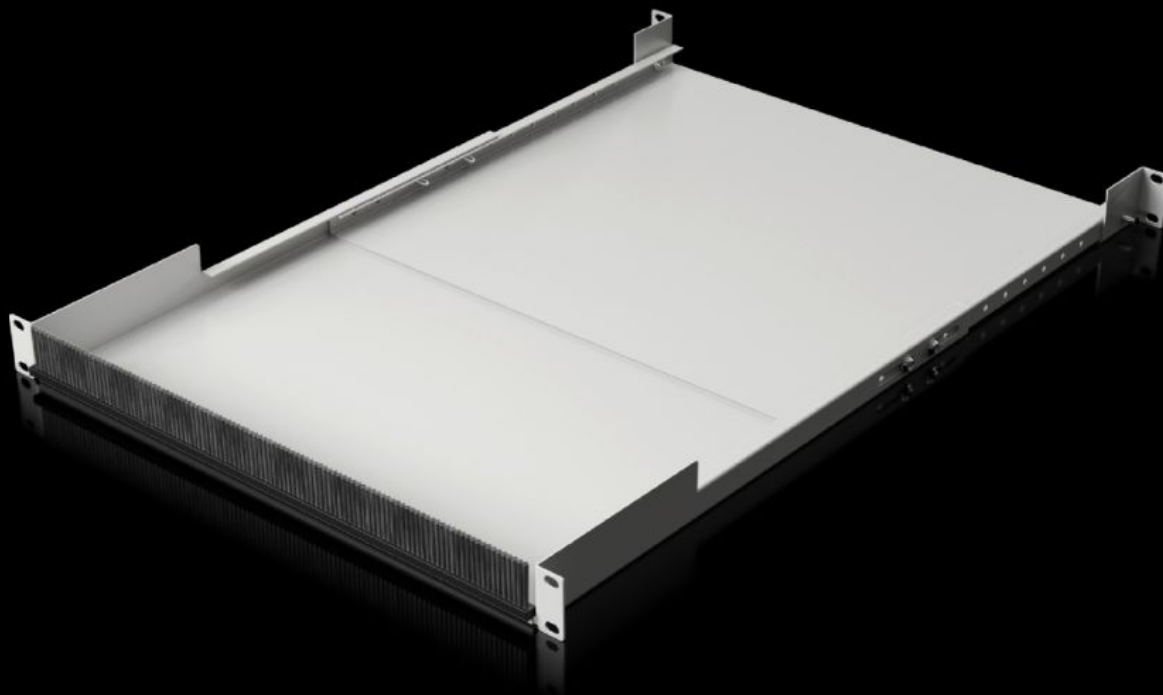
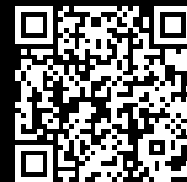


Rittal – The System.

Faster – better – everywhere.



IT 5302.042

19 英寸电缆桥架，可调深度

状态: 2026/2/11 (来源: rittal.com/tw-zh)

ENCLOSURES

POWER DISTRIBUTION

CLIMATE CONTROL

IT INFRASTRUCTURE

SOFTWARE & SERVICES

FRIEDHELM LOH GROUP



IT 5302.042 - 19 英寸电缆桥架，可调深度

Within the 482.6 mm (19") mounting level, the cable link provides an integrated cable routing option between the front and rear mounting levels inside an enclosure.

特征

型号	IT 5302.042
您的获益	<p>Cable entry at the front via brush strip for thermal partitioning of the cable entry zone</p> <p>Direct cable routing between the patch level and component with rear installation, optimum cable routing with switch mounted at the rear</p> <p>Fully depth-variable with versatile, infinitely adjustable extension of the cable link</p> <p>Prevents incorrect airflow by partitioning the transition</p> <p>Open at the top for easy retrofitting, even with cables already inserted</p> <p>Cable link extendible upwards by 1 U, by using an additional cable entry panel with brush strip</p>
材料	<p>钢板</p> <p>刷条：塑料，符合 UL 94-V0</p>
表面	喷漆
颜色	RAL 9005
供货范围	<p>Cable link</p> <p>刷条</p>
安装可能性	用于固定前后 19" 的安装平面
层面间距	500 - 750 mm
高度单位	1 U

特征

承载力（静态）	150 N
适用于	用于不受机柜影响的独立安装
说明	Assembly parts should be ordered separately
包装单元	1 件
本型号（含包装）PCF（出厂前）	PCF-Wert 18,78 kg Co ² e
税率号	73269098