

Rittal – The System.

Faster – better – everywhere.



KX 1574.000

E-Box KX, sheet steel

State: 04.04.2026 (Source: rittal.com/ua-en)

ENCLOSURES

POWER DISTRIBUTION

CLIMATE CONTROL

IT INFRASTRUCTURE

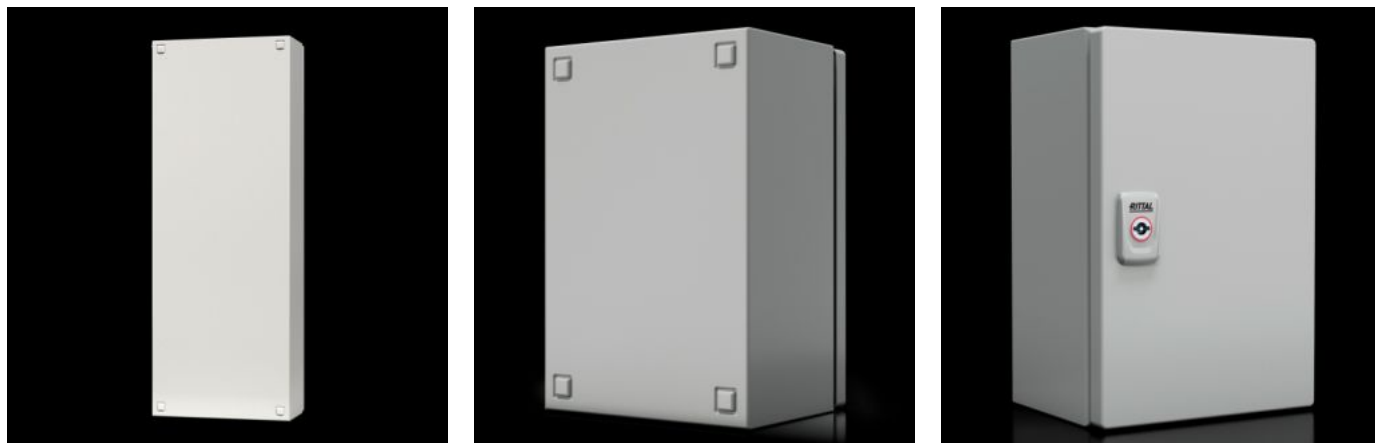
SOFTWARE & SERVICES

FRIEDHELM LOH GROUP



KX 1574.000 - E-Box KX, sheet steel

The small enclosure KX, E-Box KX (sheet steel), offers remarkable ease of assembly and flexibility when selecting lock systems.



Features

Model No.	KX 1574.000
Product description	The small enclosure KX, E-Box KX (sheet steel), offers remarkable ease of assembly and flexibility when selecting lock systems.
Material	Enclosure: Sheet steel Door: Sheet steel, all-round foamed-in PU seal
Surface finish	Enclosure and door: Dipcoat primed, powder-coated on the outside, textured paint Mounting plate: Zinc-plated
Colour	RAL 7035
Supply includes	Enclosure with door Mounting plate Cam lock with 3 mm double-bit insert 180° hinge
Protection category NEMA	NEMA 1 NEMA 3R NEMA 4 NEMA 12
Protection category to IEC 60 529	IP 66

Features

Type rating to UL 50E	Type 1 Type 3R Type 4 Type 12
IK Code	IK08
Dimensions	Width: 200 mm Height: 300 mm Depth: 155 mm
Dimensions mounting plate (W x H)	175 mm x 285 mm
Material thickness - enclosure	1.25 mm
Material thickness - door	1.25 mm
Material thickness of mounting plate	2 mm
Lock	Number of locks: 1
Basic material	Sheet steel
Packs of	1 pc(s).
Net weight	3.8 kg
Gross weight	3.984 kg
PCF per pack (cradle-to-gate)	16.8 kg CO2 eq (Cat B)
Note on PCF category	Category B: PCF value (cradle-to-gate) based on the product weight, approximately calculated and self-declared
Customs tariff number	84879059
ETIM 9	EC000261
ETIM 8	EC000261
ECLASS 8.0	27180101
Product description	KX E-Box, WHD: 200x300x155 mm, sheet steel, with mounting plate, with door

Approvals

Approvals	Bureau Veritas DNV-GL Lloyds Register of Shipping UL + C-UL (listed)
Certificates	Protection category
Explanations	Manufacturer's declaration Declaration of conformity Declaration of conformity UK PCF-declaration

Tender text

Enclosure (E-Box)

Enclosure with door:

Stable sheet steel design,
body folded from a single piece and welded,
with protection channel all-round door opening,
rear panel with eyelets for wall mounting bracket,
Door hinged on the right, with foamed-in PU seal,
with PE conductor connection in the enclosure and
via U-shaped bracket in the door,
for quick and easy earthing,
cam lock with 3 mm double-bit insert to DIN 43668,
with mounting plate.

QR code:

QR code printed on body, cover and rating plate
for clear identification and easy retrieval of relevant
product information and documentation,
and for clear traceability of the individual parts.

Accessories: Top hat rail, wall mounting bracket,
support rail, Mini-comfort handle, modular cable entry.

Material:

Enclosure, door: Sheet steel

Mounting plate: Sheet steel, zinc-plated

Enclosure and door surface finish:

Triple surface treatment for optimum protection
against corrosion and resistance to mineral oils,
lubricants, machining emulsions and solvents:
Nanoceramic coating, electrophoretic dipcoat priming
Powder-coated on the outside in textured RAL 7035.
Protection category to IEC 60 529: IP 66
Protection category to UL 508A: Type 4
Dimensions (W x H x D): 200x300x155 mm