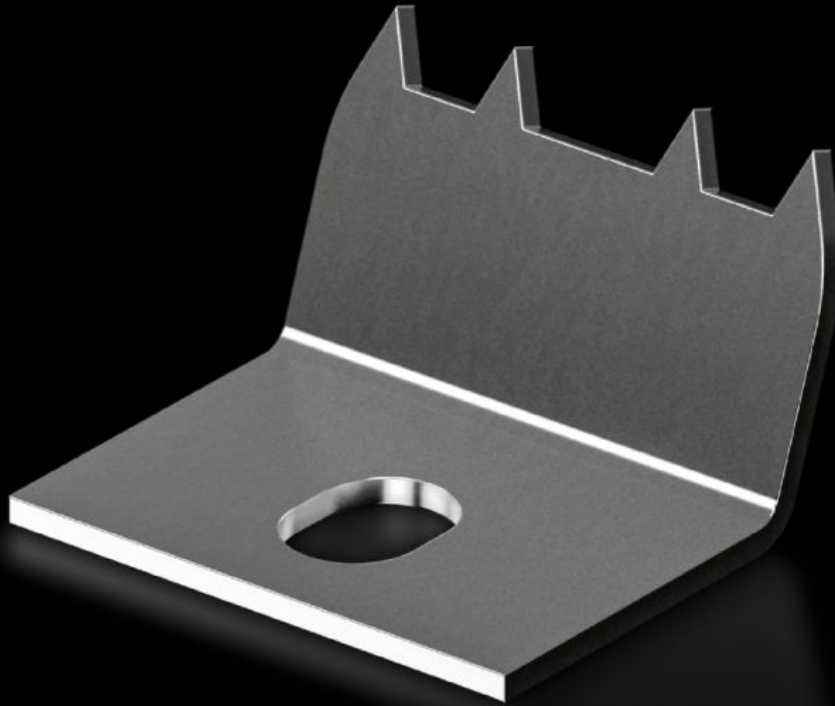


**Rittal – The System.**

Faster – better – everywhere.



**KX 2309.100**

**Mounting claw for second mounting level**

State: 07.07.2026 (Source: [rittal.com/ua-en](http://rittal.com/ua-en))

ENCLOSURES

POWER DISTRIBUTION

CLIMATE CONTROL

IT INFRASTRUCTURE

SOFTWARE & SERVICES

FRIEDHELM LOH GROUP



# KX 2309.100 - Mounting claw for second mounting level for terminal box KX, bus enclosure KX

For fixing top hat rails directly onto the rear panel of KX terminal boxes and KX bus enclosures. Creates an additional mounting level with an extra 10 mm of installation depth without having to machine the enclosure.



## Features

Model No.	KX 2309.100
Product description	For fixing top hat rails directly onto the rear panel of KX terminal boxes and KX bus enclosures. Creates an additional mounting level with an extra 10 mm of installation depth without having to machine the enclosure.
To fit enclosure type	Terminal box KX Bus enclosure KX
Packs of	20 pc(s).
Net weight	0.12 kg
Gross weight	0.16 kg
Customs tariff number	83024900
ETIM 9	EC002620
ETIM 8	EC002620
ECLASS 8.0	27189234
Product description	KX Mounting claw for second mounting level, for terminal boxes KX and bus enclosures KX