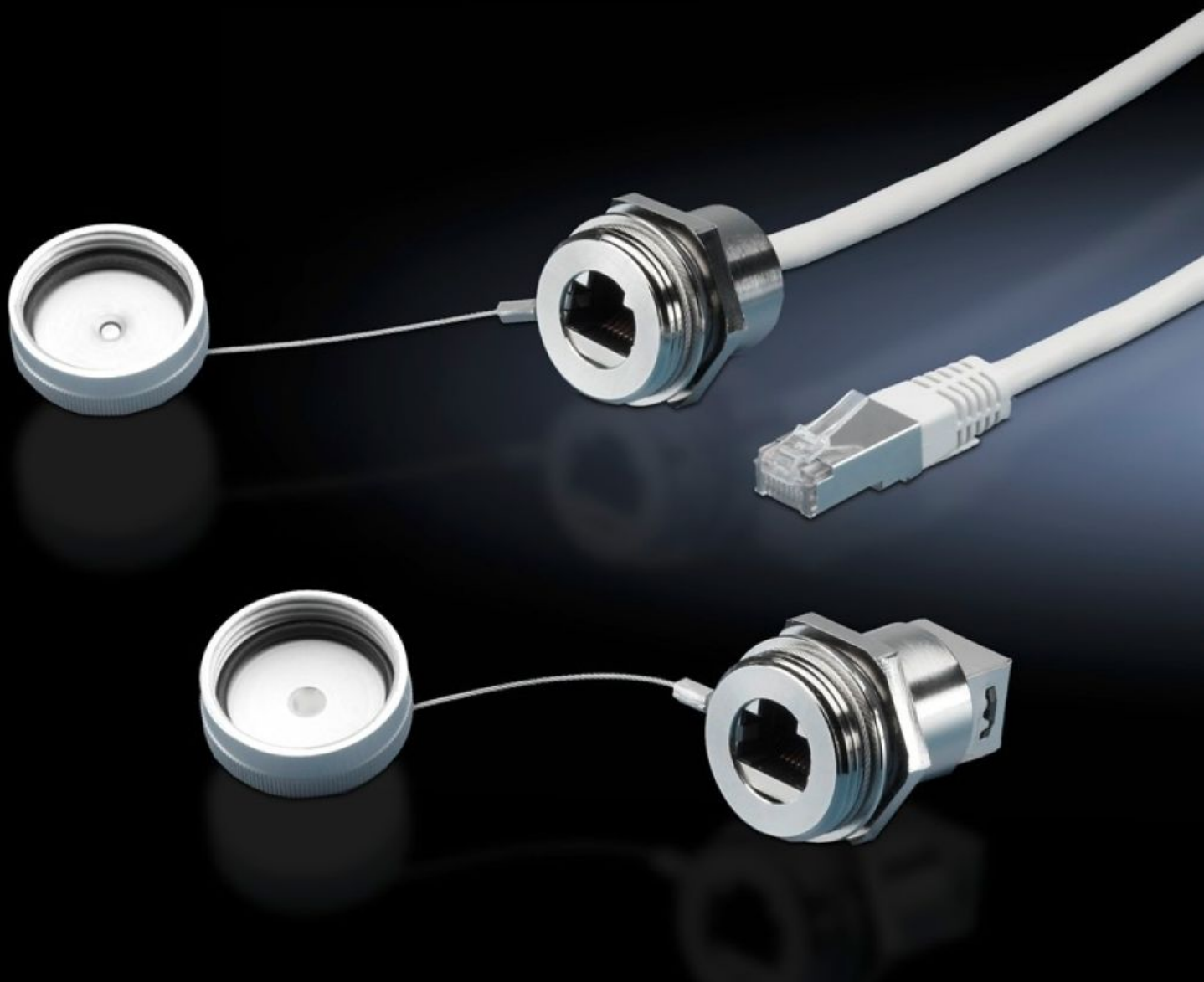


Rittal – The System.

Faster – better – everywhere.



SZ 2482.710

Interface extension with wall connection

State: 29.08.2025 (Source: rittal.com/ua-en)

ENCLOSURES

POWER DISTRIBUTION

CLIMATE CONTROL

IT INFRASTRUCTURE

SOFTWARE & SERVICES

FRIEDHELM LOH GROUP



SZ 2482.710 - Interface extension with wall connection

For extending the internal enclosure interfaces – e.g. from industrial PCs and switches – up to the outside of the enclosure.

Features

| | |
|-------------------------------------|-------------------------------------------------------------------------------------------------------------------------------------------------------------------------------------------------------------------------|
| Model No. | SZ 2482.710 |
| Design | RJ45 wall-mounted jack on internal connector |
| Product description | For extending the internal enclosure interfaces – e.g. from industrial PCs and switches – up to the outside of the enclosure. The wall connection only needs the same space as a switch. |
| Benefits | Rapid access for maintenance work The protection category of the enclosure is preserved The lock nut cuts automatically into the spray-finish, thereby creating a conductive connection Captive protective cap |
| Material | Enclosure: Brass Cover: Aluminium Seal: Polyamide |
| Surface finish | Enclosure: Nickel-plated Cover: Natural anodised |
| Length | 1 m |
| Dimensions | Length: 1 m |
| For wall thickness (max.) | 1 - 6 mm |
| IP protection category to IEC 60529 | IP67 with sealed protective cap |
| Packs of | 1 pc(s). |
| Net weight | 0.079 |
| Gross weight | 0.096 |
| Customs tariff number | 85444290 |
| EAN | 4028177550223 |

Features

| | |
|------------|----------|
| ETIM 9 | EC001408 |
| ETIM 8 | EC001408 |
| ECLASS 8.0 | 19059205 |