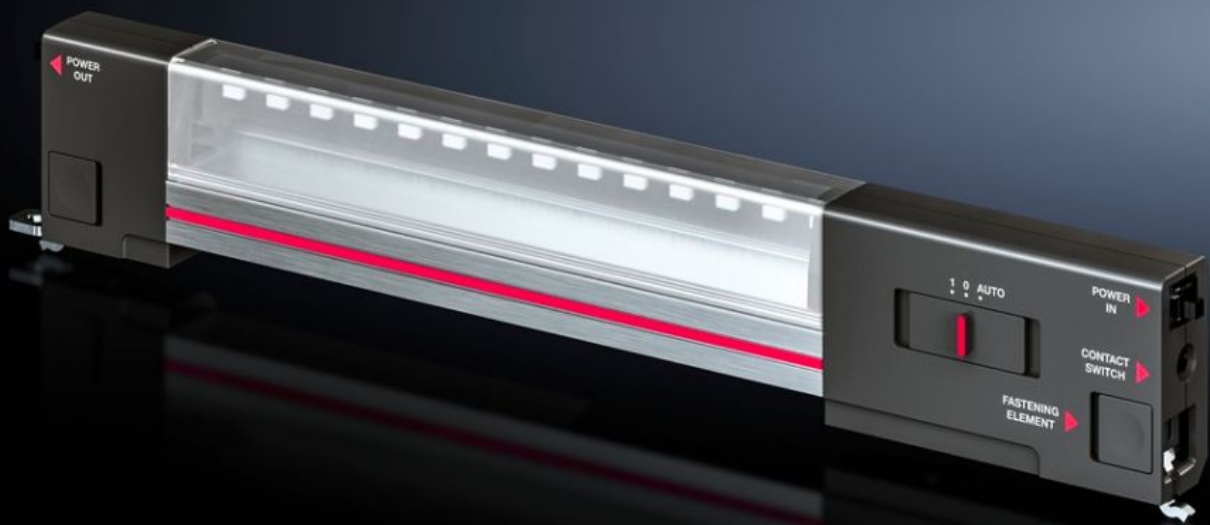


# Rittal – The System.

Faster – better – everywhere.



## SZ 2500.110 LED system light

State: 05.06.2026 (Source: rittal.com/ua-en)

ENCLOSURES

POWER DISTRIBUTION

CLIMATE CONTROL

IT INFRASTRUCTURE

SOFTWARE & SERVICES

FRIEDHELM LOH GROUP



# SZ 2500.110 - LED system light

LED system light – the first light especially for enclosures! Highly innovative LED technology for even more light into the very last corner.



## Features

Model No.	SZ 2500.110
Design	Without socket
Benefits	Optimum illumination of the entire enclosure Optionally with clip, screw and magnetic attachment A configuration to suit every application
Design	Without socket
Material	Light body: Extruded aluminium Light cover: Polycarbonate Light ends: PC-ABS
Colour	Enclosure: RAL 7016
Supply includes	Assembly screws
Power consumption	7 W
Connection options	Infeed, 2-pole Through-wiring, 2-pole Door-operated switch
Protection class	II (all-insulated)

# Features

---

Light – installation type	Screw-fastening Clip attachment Magnetic attachment (accessory)
Installation options	The internal mounting rail AX and the mounting bracket are required when installing in compact enclosures Directly onto the enclosure section with 25 mm pitch pattern
Luminous flux	600 lm
Light colour	4000 K (neutral white)
Note	Connection accessories should be ordered separately
Dimensions	Width: 337 mm Height: 55 mm Depth: 23 mm
Operating temperature range	-20 °C...55 °C
Rated operating voltage	100 V - 230 V, 1~, 50 Hz/60 Hz
IP protection category to IEC 60529	IP 20
Packs of	1 pc(s).
Net weight	0.263 kg
Gross weight	0.351 kg
PCF per pack (cradle-to-gate)	7.4
Customs tariff number	94054990
ETIM 9	EC000321
ETIM 8	EC000321
ECLASS 8.0	27189241
Product description	SZ System Light LED, 600 Lumen, L: 337 mm, 100-230 V

---

# Approvals

---

# Approvals

---

Approvals

CCC exception letter  
ENEC  
30 - KC Korea

---

Explanations

Declaration of conformity  
Declaration of conformity UK  
PCF-declaration