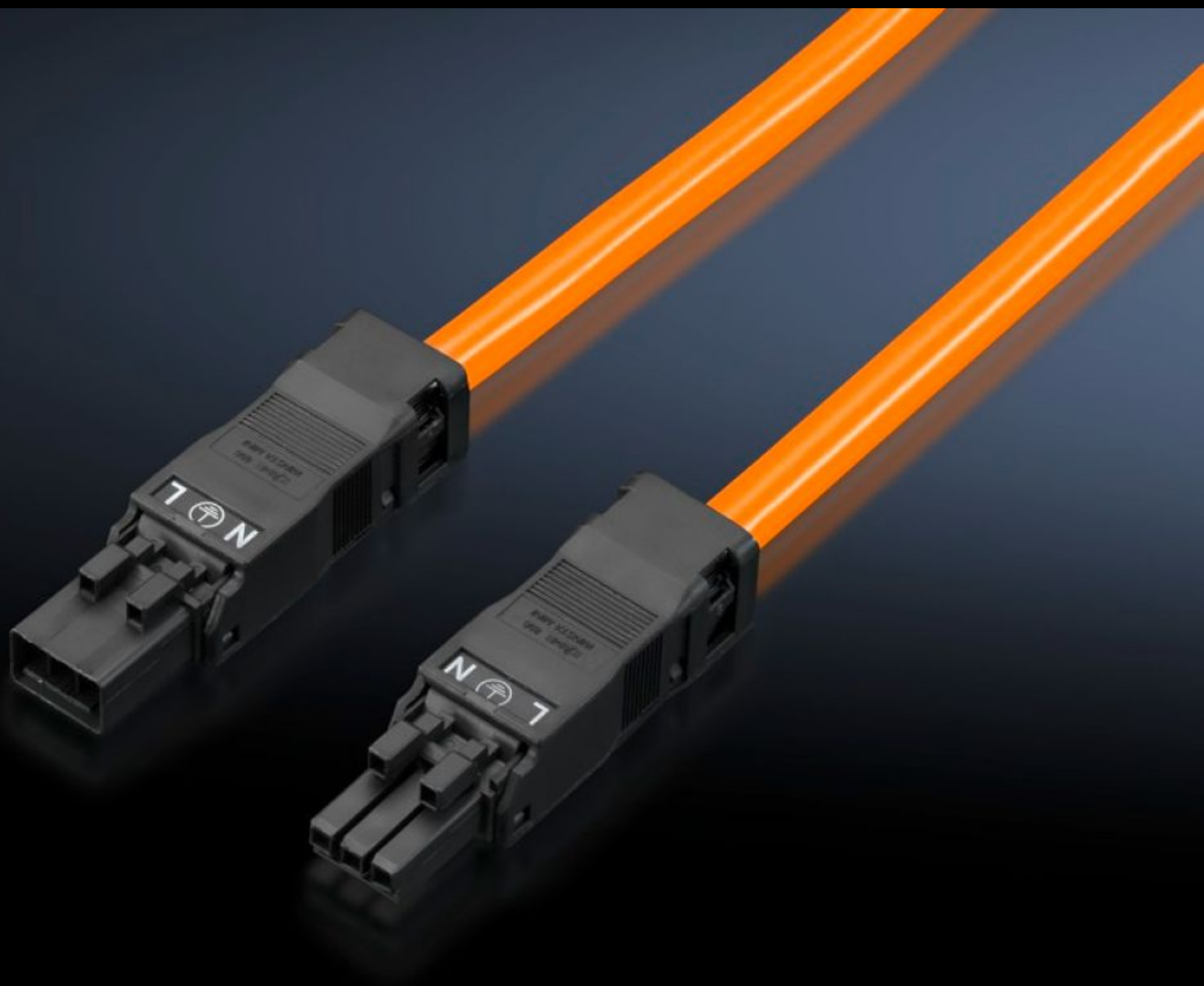


Rittal – The System.

Faster – better – everywhere.



SZ 2500.530 Connection cable

State: 30.01.2026 (Source: rittal.com/ua-en)

ENCLOSURES

POWER DISTRIBUTION

CLIMATE CONTROL

IT INFRASTRUCTURE

SOFTWARE & SERVICES

FRIEDHELM LOH GROUP



SZ 2500.530 - Connection cable

For simple, time-saving connection of the LED system light.

Features

Model No.	SZ 2500.530
Design	Through-wiring, 3-pole (with socket and connector)
Product description	For time-saving and simple installation of the LED system light.
Colour	Orange
Length	1,000 mm
AWG	AWG 16
Standards	Power supply cords: AVLV2 Mains connector: ECBT2
Dimensions	Length: 1,000 mm
Rated operating voltage	100 V - 240 V, 1~, 50 Hz/60 Hz
Packs of	1 pc(s).
Net weight	0.15
Gross weight	0.16
Customs tariff number	85444290
EAN	4028177811362
ETIM 9	EC001576
ETIM 8	EC001576
ECLASS 8.0	27060402

Approvals

Approvals	UR + C-UR (recognized)
-----------	------------------------

Approvals

Explanations

Manufacturer's declaration

Declaration of conformity

Declaration of conformity UK