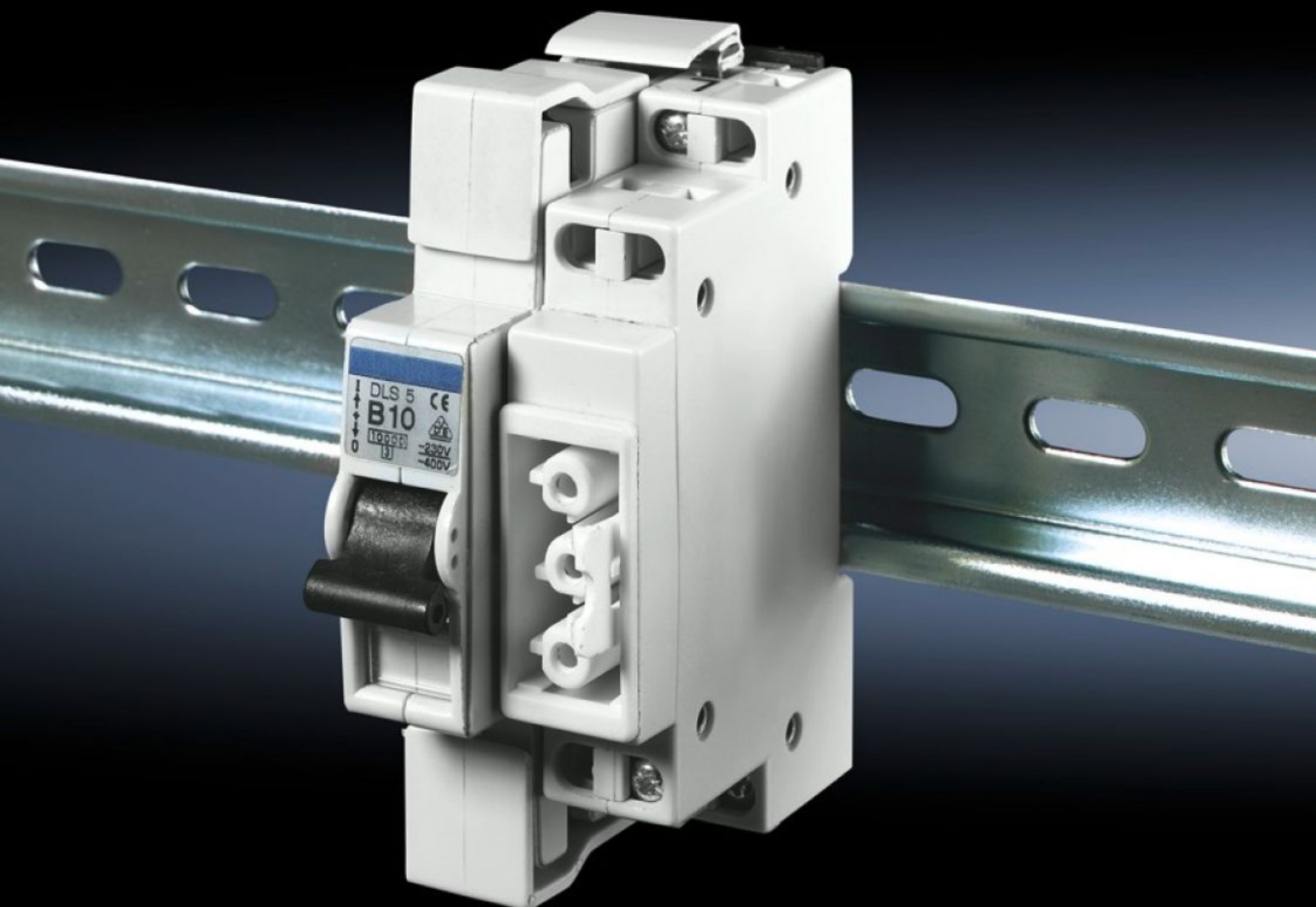
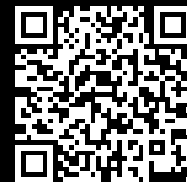


# Rittal – The System.

Faster – better – everywhere.



## SZ 2507.500

## Connection component:with circuit-breaker 10 A

State: 05.07.2025 (Source: [rittal.com/ua-en](http://rittal.com/ua-en))

ENCLOSURES

POWER DISTRIBUTION

CLIMATE CONTROL

IT INFRASTRUCTURE

SOFTWARE & SERVICES

FRIEDHELM LOH GROUP



# SZ 2507.500 - Connection component:with circuit-breaker 10 A

Connection component to be snapped onto the top hat rail.

## Features

Model No.	SZ 2507.500
Product description	Connection component to be snapped onto the top hat rail
Benefits	Reduce assembly costs: Power is supplied rapidly and reliably to system and workstation lights via connection cables
Rated impulse withstand voltage, phase to phase	4000 V AC
Rated insulation voltage	400 V AC
Assembly instruction	For independently configured cables, connector 2507.200 must be used
Rated operating voltage	230 V - 400 V
Packs of	1 pc(s).
Net weight	0.179
Gross weight	0.197
Customs tariff number	85369095
EAN	4028177233409
ETIM 9	EC002625
ETIM 8	EC002625
ECLASS 8.0	27189234

## Approvals

Certificates	EAC
--------------	-----

# Approvals

---

Explanations

Declaration of conformity

Declaration of conformity UK