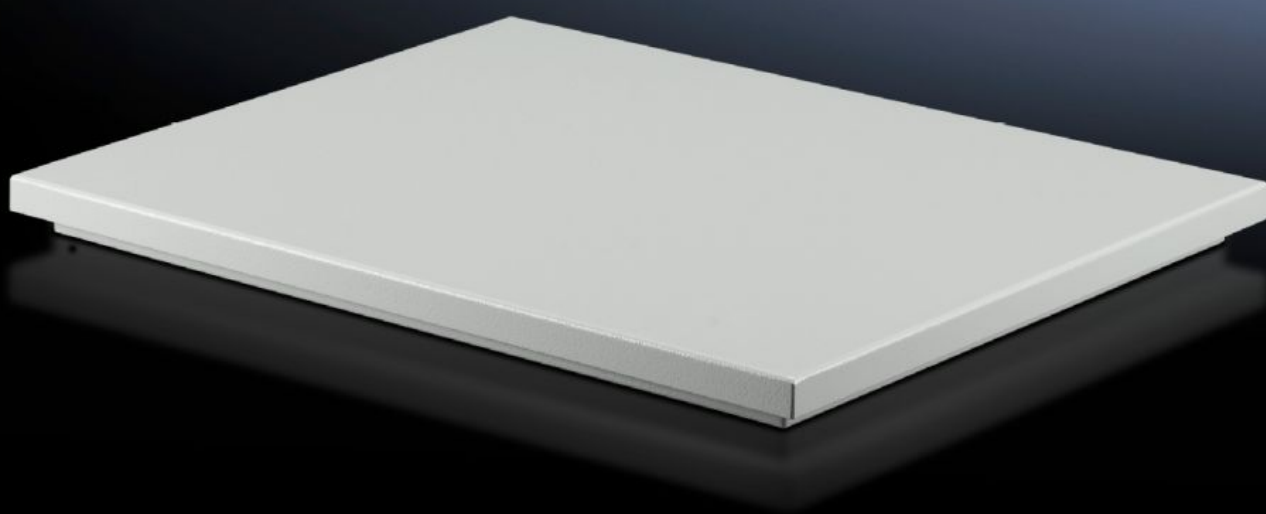
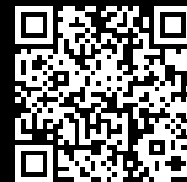


Rittal – The System.

Faster – better – everywhere.



SK 3149.440

TopTherm roof-mounted fans

State: 14.12.2025 (Source: rittal.com/ua-en)

ENCLOSURES

POWER DISTRIBUTION

CLIMATE CONTROL

IT INFRASTRUCTURE

SOFTWARE & SERVICES

FRIEDHELM LOH GROUP



SK 3149.440 - TopTherm roof-mounted fans for TS 8

The roof-mounted fans for TS fit precisely onto the cut-outs of the TopTherm roof-mounted cooling units. Also suitable for mounting on any sufficiently large roof surface. Mounting cut-outs are not compatible with successor products in the VX IT family. If reusing the roof plate in the VX IT, adaptor frame 5050.701 will be required.

Features

| | |
|-------------------------|--|
| Model No. | SK 3149.440 |
| Product description | The active roof-mounted fans fit precisely onto the cut-outs of the small and medium performance category of TopTherm roof-mounted cooling units. |
| Product modification | Монтажные вырезы не совместимы. При последующем использовании потолочной панели необходима адаптерная рама 5050.701. Mounting cut-outs are not compatible. If reusing the roof plate, adaptor frame 5050.701 is required. |
| Material | Sheet steel, spray-finished |
| Colour | RAL 7035 |
| Supply includes | Unit ready for connection with built-in radial fan Sealing and assembly parts |
| Rated operating voltage | 400 V, 3~, 50 Hz/60 Hz 460 V, 3~, 60 Hz |
| Power consumption Pel | At 50 Hz: 95 W At 60 Hz: 140 W |
| Rated current max. | At 50 Hz: 0.35 A At 60 Hz: 0.35 A |
| Dimensions | Width: 550 mm Height: 125 mm Depth: 370 mm |
| Mounting cut-out | Cut-out width: 475 mm Cut-out depth: 260 mm |

Features

| | |
|-------------------------------------|--|
| IP protection category to IEC 60529 | IP 43 |
| Operating temperature range | -10 °C...55 °C |
| Noise level | At 50 Hz: 68 dB(A) At 60 Hz: 69 dB(A) |
| Packs of | 1 pc(s). |
| Net weight | 8.664 |
| Gross weight | 9.12 |
| Customs tariff number | 84145915 |
| EAN | 4028177387133 |
| ECLASS 8.0 | 27180716 |

Approvals

| | |
|--------------|---------------------------|
| Explanations | Declaration of conformity |
|--------------|---------------------------|