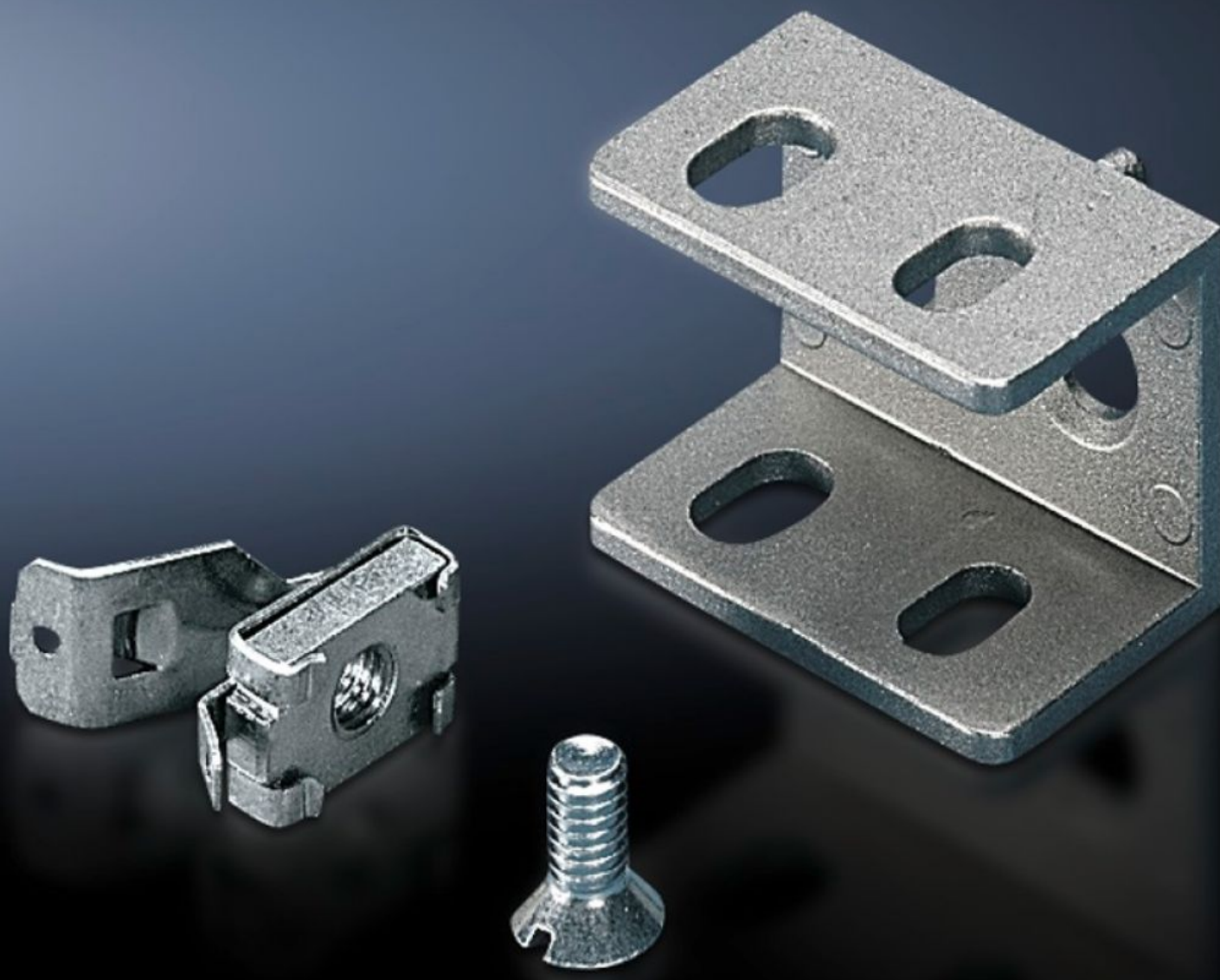


Rittal – The System.

Faster – better – everywhere.



SZ 4182.000

Mounting bracket PS

State: 23.08.2025 (Source: rittal.com/ua-en)

ENCLOSURES

POWER DISTRIBUTION

CLIMATE CONTROL

IT INFRASTRUCTURE

SOFTWARE & SERVICES

FRIEDHELM LOH GROUP



SZ 4182.000 - Mounting bracket PS for VX, TS, VX SE

For variable attachment of punched rail 23 x 23 mm.



Features

Model No.	SZ 4182.000
Product description	For variable attachment of punched rail 23 x 23 mm.
Material	Die-cast zinc
Supply includes	1 set = 1 mounting bracket, 1 screw M6 x 12 mm, 1 cage nut M6
Installation options	<p>Optionally flush with: Outer enclosure edge or enclosure clearance width</p> <p>On the vertical TS enclosure section via snap-on nuts TS 8800.808 or adaptor rails for VX compatibility, height-offset, via TS punched rail 25 x 38 mm</p> <p>On the vertical VX, VX SE enclosure section via adaptor rails for VX compatibility</p> <p>On the horizontal VX, TS enclosure section</p> <p>On the horizontal VX SE enclosure section, bottom</p> <p>On the horizontal VX SE enclosure section, top in the depth</p> <p>On enclosures and rails with rectangular system punching 12.5 x 11 mm</p>
Note	U nuts (recommended: M6)
To fit enclosure type	VX TS VX SE
Packs of	24 pc(s).
Net weight	1.2

Features

Gross weight	1.509
Customs tariff number	73182900
EAN	4028177093362
ETIM 9	EC002625
ETIM 8	EC002625
ECLASS 8.0	27189234