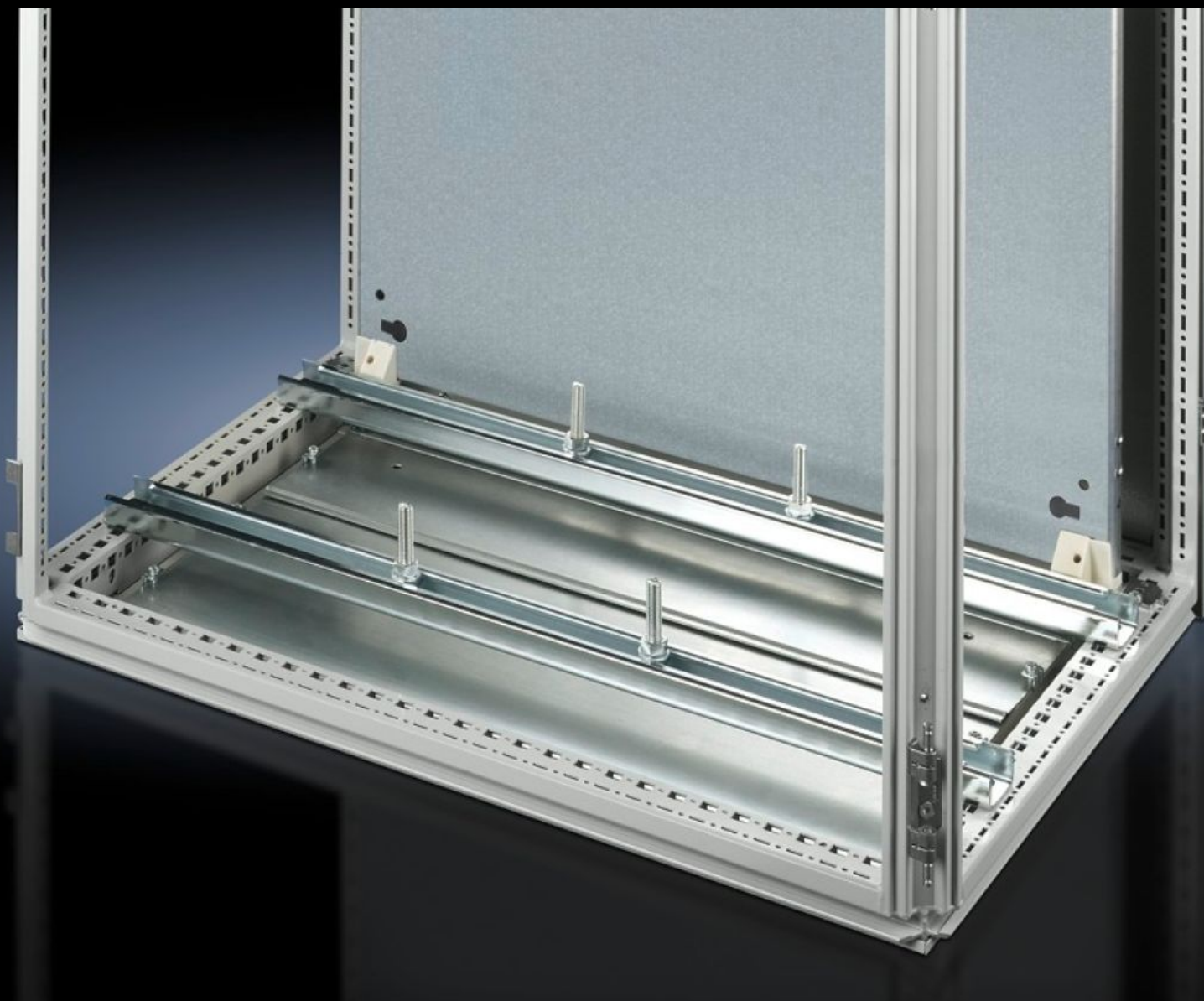
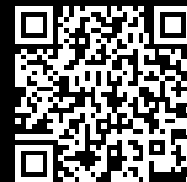


Rittal – The System.

Faster – better – everywhere.



SZ 4347.000

System support rails

State: 12.07.2025 (Source: [rittal.com/ua-en](https://www.rittal.com/ua-en))

ENCLOSURES

POWER DISTRIBUTION

CLIMATE CONTROL

IT INFRASTRUCTURE

SOFTWARE & SERVICES

FRIEDHELM LOH GROUP



SZ 4347.000 - System support rails

For heavy installed equipment such as transformers. T-head screw and slot in the support rail accommodate all mounting dimensions.



Features

| | |
|----------------------|---|
| Model No. | SZ 4347.000 |
| Product description | For heavy installed equipment such as transformers. T-head screw and slot in the support rail accommodate all mounting dimensions. |
| Material | Sheet steel |
| Surface finish | Zinc-plated |
| Supply includes | 2 system support rails (45 x 25 mm) 4 T-head screws M12 x 60 mm Assembly parts |
| Installation options | On the vertical TS enclosure section via snap-on nuts TS 8800.808 or adaptor rails for VX compatibility, height-offset, via TS punched rail 25 x 38 mm On the VX SE enclosure section in the width (bottom and top) or in the depth (bottom and top) (without mounting plate) via snap-on nuts 8800.808. On the horizontal TS enclosure section: in the width, in the depth (without mounting plate) On base configuration rail for TP |
| To fit | Enclosure type: TS Width: = 1,000 mm |
| Packs of | 2 pc(s). |
| Net weight | 4.64 |

Features

| | |
|-----------------------|---------------|
| Gross weight | 4.839 |
| Customs tariff number | 73269098 |
| EAN | 4028177099395 |
| ETIM 9 | EC000293 |
| ETIM 8 | EC001285 |
| ECLASS 8.0 | 27189261 |